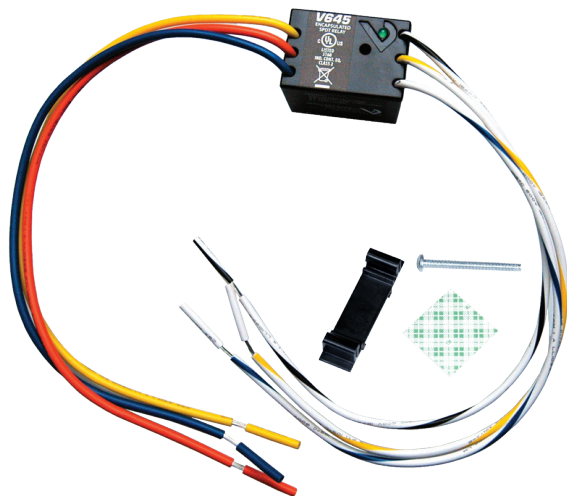


V645



V645

10A SPDT Mini Command Relay

Installer's Specifications

Operating Temperature	-0°C to 60°C (-32° to 140°F)
Operating Humidity	10-90% non condensing
Expected Relay Life	Electrical (at rated current): 100,000 cycles Mechanical (unpowered): 10,000,000 cycles
Relay Status	LED ON=energized
Insulation Class	277 VAC RMS
<u>Wire Specifications:</u>	
Lead Length	10" (254mm) min.
Gauge	UL1015; Coil: 18AWG; Contacts: 16AWG
Agency Approvals	UL508 enclosed device listing, pollution degree 2

INSTALLATION

Disconnect and lock out all power sources before beginning the installation.

1. Mount the unit using the DIN rail clip or the screw.
2. Connect coil:
 - Choose the coil common lead (white with yellow stripe) and connect it to the common (-) source termination point.
 - Choose either the low voltage (24-30 VAC/DC, white with blue stripe) or high voltage (120 VAC, white with black stripe) lead, depending on the application requirements, and connect it to the (+) source termination point.*
3. Connect relay contacts:
 - Choose the relay common wire (yellow) and connect to the switched load.
 - Choose the relay N.O. (orange) or N.C. (blue) lead* and connect to the switched load.
4. Secure the enclosure and reconnect power.

* Isolate or insulate all non-terminated wires according to local electrical code requirements, i.e. wire nut.



HAZARD OF ELECTRIC SHOCK, EXPLOSION, OR ARC FLASH

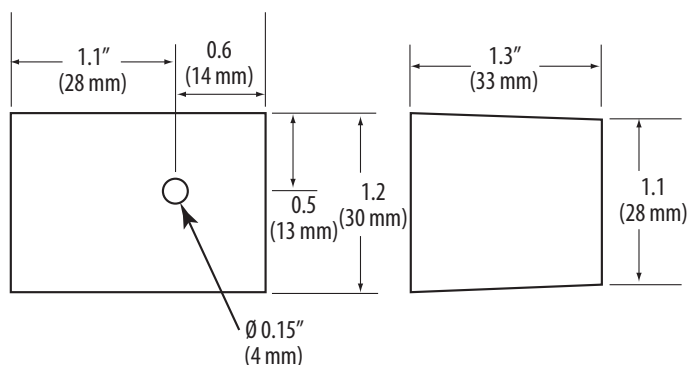
- Follow safe electrical work practices. See NFPA 70E in the USA, or applicable local codes.
 - This equipment must only be installed and serviced by qualified electrical personnel.
 - Read, understand and follow the instructions before installing this product.
 - Turn off all power supplying equipment before working on or inside the equipment.
 - Use a properly rated voltage sensing device to confirm power is off.
- DO NOT DEPEND ON THIS PRODUCT FOR VOLTAGE INDICATION

Failure to follow these instructions will result in death or serious injury.

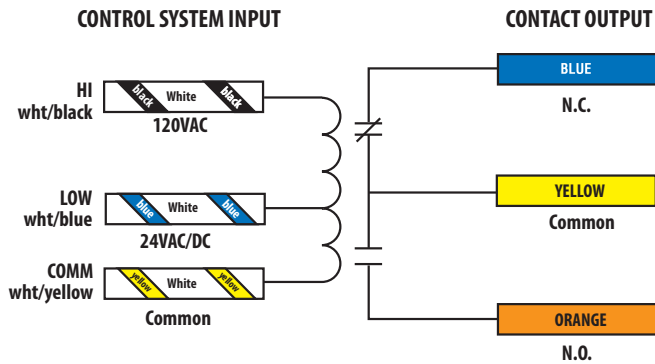
NOTICE

- This product is not intended for life or safety applications.
- Do not install this product in hazardous or classified locations.
- The installer is responsible for conformance to all applicable codes.
- Mount this product inside a suitable fire and electrical enclosure.

DIMENSIONS



WIRING COLOR CODES



CONTACT AND COIL SPECIFICATIONS

TYPICAL COIL PERFORMANCE

Voltage	Coil Current	
	AC	DC
24-30V.....	32mA	13mA
120V.....	17mA	—

CONTACT RATINGS

Resistive	10A@250VAC, N.O. 7A@250VAC, N.C. 6A@277VAC 7A@30VDC
Motor	125VAC, 1/4 HP, N.O.

WIRING EXAMPLE

