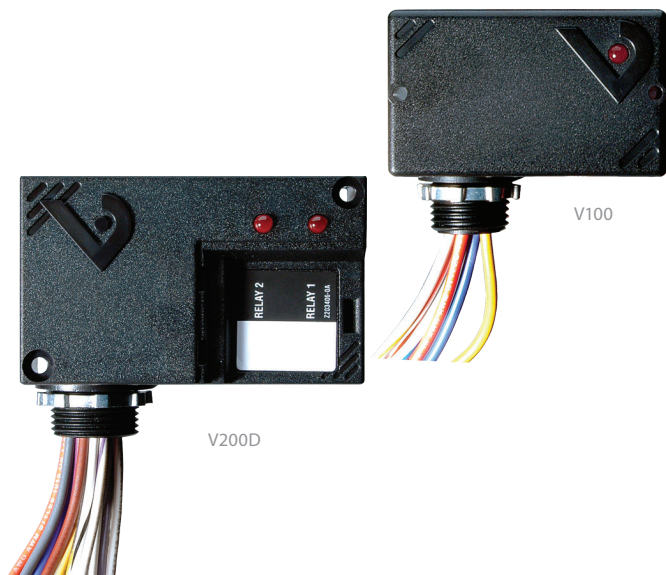


VICTORY 100 & 200 SERIES

Great for External Mount Applications



Victory 100 and 200 Series 10 A enclosed relays are pilot-duty relays in an easy-to-use nipple mount enclosure. The V100/V200 Series provide quick relay mounting without a dedicated field enclosure, making them ideal for retrofit projects. Field-selectable high and low voltage coil inputs provide on-site versatility.

SPECIFICATIONS

Operating Humidity Range	10 to 90% RH non-condensing
Expected Relay Life	Electrical (@ rated current) 100,000 cycles; Mechanical (unpowered) 10,000,000 cycles
Relay Status	LED ON=energized
Insulation Class	600 Vac RMS

OPERATING TEMPERATURE RANGE

V100, V100DC, V200	-34 to 60 °C (-29 to 140 °F)
V100D, V200D	-40 to 55 °C (-40 to 131 °F)

Wire Specifications	
Lead Length	14" (356 mm) min.
Gauge	UL1015; Coil: 18 AWG; Contacts: 16 AWG

WARRANTY

Limited Warranty	5 years
------------------	---------

AGENCY APPROVALS

Agency Approvals	UL 508
------------------	--------



Sleek enclosure

Reduces the need for panel space

UL508 Listed

Designed and listed for field installation...makes electrical inspection a snap

Nipple mount

Victory Series products can be mounted to any electrical enclosure, easing installation

Eliminate conduit

Run low voltage instead of line voltage...eliminates conduit in some applications

Flexible wire

Flexible tinned stranded wire...fits easily in tight spaces, provides secure connections to wire nuts

APPLICATIONS

- Command contactors
- Control motors
- Isolation
- Device interlocking
- Relay logic
- Sense voltages for alarm conditions

TYPICAL COIL PERFORMANCE

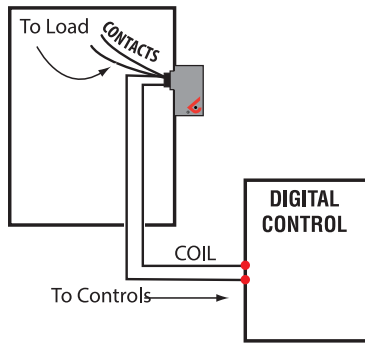
Pull in Voltage	AC	DC
10 to 30 V	8	10
120 V	58	
Drop Out Voltage		
10 to 30 V	3	4
120 V	22	
Voltage	Coil Current	
	AC	DC
10 V	57 mA	32 mA
12 V	70 mA	40 mA
24 V	93 mA	53 mA
30 V	100 mA	55 mA
120 V	63 mA	

CONTACT RATINGS

SPDT Resistive	28VDC, 10A, N.O. 28 VDC, 5A, N.C.
Tungsten	120VAC, TV-3, N.O. only
Motor	120VAC, 1/3HP, N.O. only 240VAC, 1/3HP N.O. only
Ballast	120VAC, 1A, N.O. only

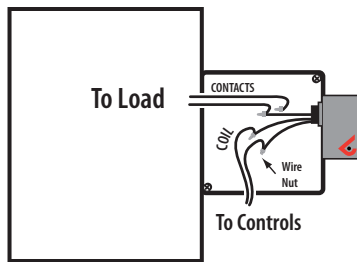
NIPPLE MOUNT DIRECTLY TO A PANEL

Wiring Diagram



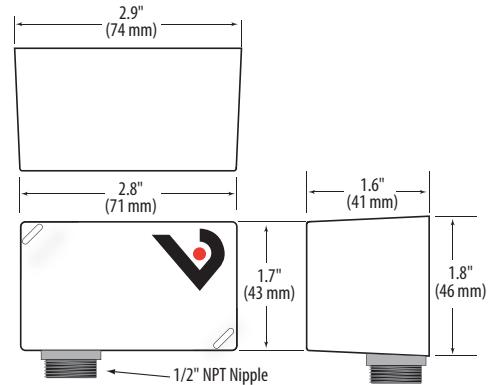
NIPPLE MOUNT TO ANY 2X OR 4X ELECTRICAL BOX

Wiring Diagram



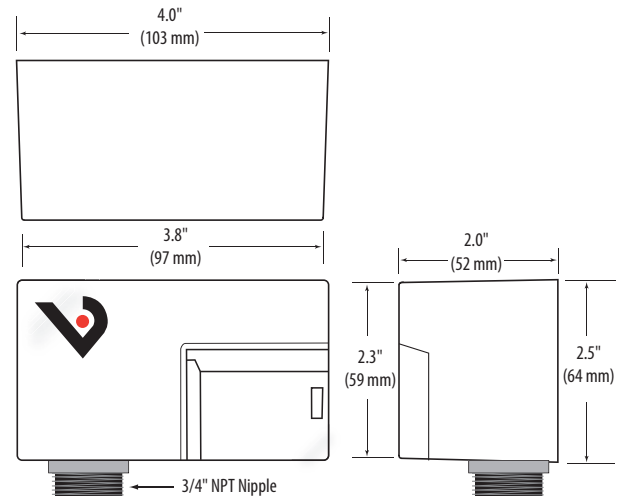
V100/V100DC/V200

Dimensional Drawing



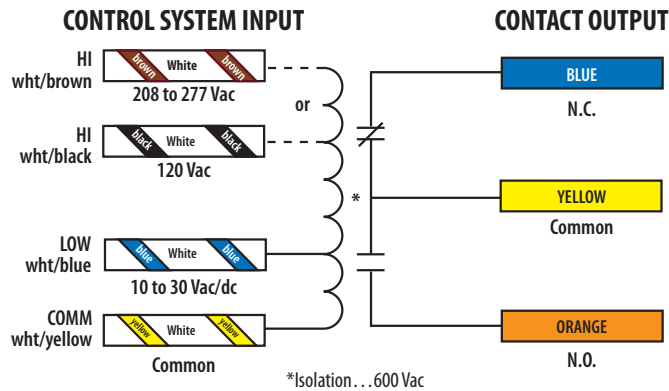
V100D/V200D

Dimensional Drawing



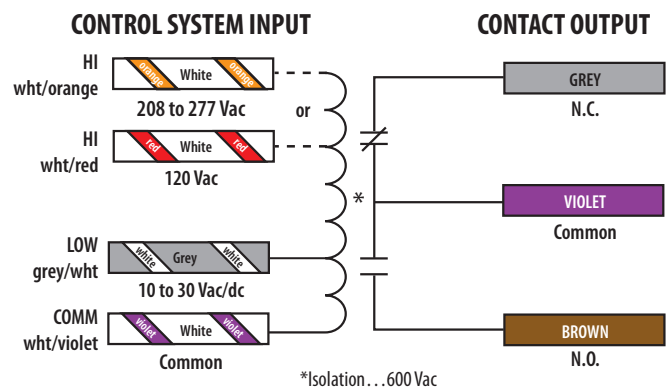
PRIMARY

Wire Color Codes



RELAY 2 ON V100D AND V200D ONLY

Wire Color Codes



ORDERING INFORMATION

MODEL	RELAY	COIL	AMPERAGE RATING	RELAY POWER LED	UL
V100*	SPDT	10 to 30 Vac/dc, 120 Vac	10 A	•	•
V100D	2x SPDT	10 to 30 Vac/dc, 120 Vac		•	•
V100DC	SPDT	10 to 30 Vdc		•	•
V200	SPDT	10 to 30 Vac/dc, 208 to 277 Vac		•	•
V200D	2x SPDT	10 to 30 Vac/dc, 208 to 277 Vac		•	•

Note: Some units are Plenum rated per UL 1995. For details, see White Paper VWP01, UL 1995 and Plenum Ratings, at www.veris.com.

*U.S. origin version available.