

SPECIFICATIONS FOR SMS PROTECTIVE CLOTHING

SMS protective garments from Zenith Safety Products® keep employees safe from numerous dry particles and water-based liquids. Our garments can be used in work environments where hazardous or non-hazardous contaminants may be present.

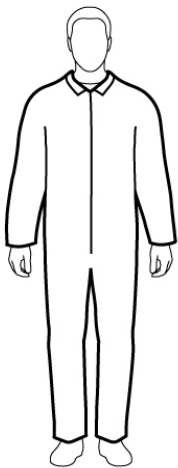
These garments feature three tough layers to keep contaminants out. The two outer layers are made of spun-bonded filaments that stand up to tearing and abrasion. The inner layer is made of melt-blown polypropylene microfibers that filter out potentially harmful particulates and liquids. They have the added benefit of breathability, which allows air and water to pass through for superior comfort. Coveralls feature a deluxe pattern with two sewn pockets and elastic in the back.

Physical property	Test method	Unit	Test results
Basic Weight	ASTM D3776	oz/y ²	1.5 oz/y ²
Grab Tensile MD	ASTM D5034	lbs.	25 lbs.
Grab Tensile XD	ASTM D5034	lbs.	20 lbs.
Trap Tear MD	ASTM D5033	lbs.	7.9 lbs.
Trap Tear XD	ASTM D5033	lbs.	6.7 lbs.

Serged Seams



Dry Particulate



Models
SEC829 - SEC834
Coveralls, white, zipper front with storm flap collar.
Sizes: Medium to 4X-Large
Case Qty: 25



Models
SEC835 - SEC840
Coveralls, white, zipper front with storm flap, elastic wrist and ankles.
Sizes: Medium to 4X-Large
Case Qty: 25



Models
SEC841 - SEC846
Coveralls, white, zipper front with storm flap, attached hood, elastic wrist and ankles.
Sizes: Medium to 4X-Large
Case Qty: 25



Models
SEC847 - SEC852
Coveralls, navy, zipper front with storm flap, attached hood, elastic wrist and ankles.
Sizes: Medium to 4X-Large
Case Qty: 25



Models
SEC853 - SEC856
Lab coats, white, plastic snaps, two pockets and collar.
Sizes: Medium to 2X-Large
Case Qty: 30



Models
SEC857 - SEC859
Smocks, white, attached ties.
Sizes: Medium to 2X-Large
Case Qty: 50

SMS PROTECTIVE CLOTHING

Recommended Sizing Chart

