

# OCTTEMP2000

## 8 CHANNEL THERMOCOUPLE DATA LOGGER WITH LCD



### Features

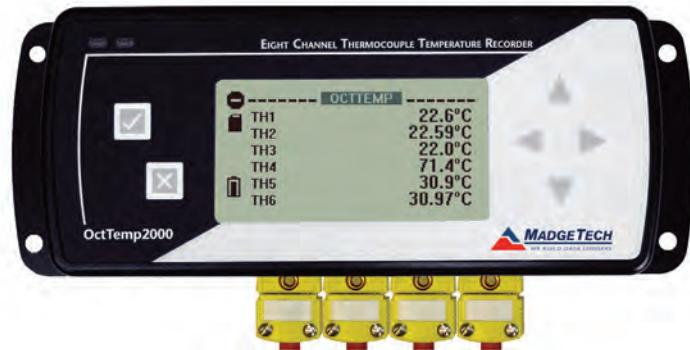
- Large Backlit LCD
- User-Friendly Front Panel
- Accepts Thermocouple Types J, K, T, E, R, S, B, N
- High Speed Downloading
- Onscreen Statistics
- External Power or User Replaceable Battery
- Low Battery Indicator

### Benefits

- Simple Setup and Installation
- Minimal Long-Term Maintenance
- Long-Term Field Deployment

### Applications

- Monitor Multiple Points
- Warehouse Monitoring
- Refrigerator Monitoring
- Medical and Pharmaceutical
- Oven Monitoring
- Smoke Houses
- Food Processing
- HVAC
- Engine Studies

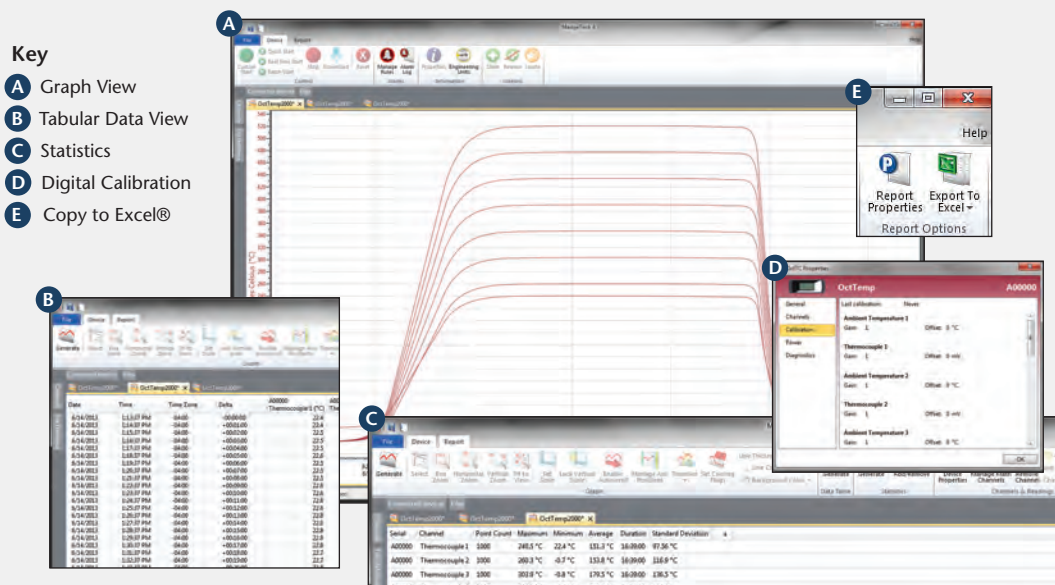


\*Thermocouple Plugs/Probes Sold Separately

The OctTemp2000 is an eight channel thermocouple data logger with an LCD. The device features onscreen minimum, maximum and average statistics, as well as a user configurable graphics screen that allows for any combination of channels to be displayed. The device accepts J, K, T, E, R, S, B and N type thermocouples.

The OctTemp2000 is ideal for a variety of applications, whether it is remote temperature monitoring, or multiple points in a central location. Data from all channels is simultaneously logged and displayed onscreen for real-time monitoring. It can then be downloaded to a PC for further analysis.

## MADGETECH DATA LOGGER SOFTWARE



- Software Features:**
- Multiple graph overlay
  - Statistics
  - Digital calibration
  - Zoom in/ zoom out
  - Lethality equations (F0, PU)
  - Mean Kinetic Temperature
  - Full time zone support
  - Data annotation
  - Min./Max./Average lines
  - Data table view
  - Automatic report generation
  - Summary view
  - Multilingual

# OCTTEMP2000 SPECIFICATIONS\*

<b>8 Internal Channels</b>			
<b>Temperature Range:</b>	-20 °C to +60 °C (-4 °F to +140 °F)		
<b>Temperature Resolution:</b>	0.05 °C		
<b>Calibrated Accuracy:</b>	±0.5 °C (0 to +50 °C)		
<b>8 Remote Channels</b>			
<b>Remote Channel Thermocouple Types:</b>	J, K, T, E, R, S, B, N		
<b>Thermocouple Connection:</b>	Female subminiature (SMP)		
<b>Cold Junction Compensation:</b>	Automatic, based on internal channel		
<b>Maximum Thermocouple Resistance:</b>	1000 Ω, <100 Ω recommended		
<b>Thermocouple</b>	<b>Range (°C)</b>	<b>Resolution</b>	<b>Accuracy</b>
J	-210 to +760	0.1 °C	±0.5 °C
K	-270 to +1370	0.1 °C	±0.5 °C
T	-270 to +400	0.1 °C	±0.5 °C
E	-270 to +980	0.1 °C	±0.5 °C
R	-50 to +1760	0.5 °C	±2.0 °C
S	-50 to +1760	0.5 °C	±2.0 °C
B	+50 to +1820	0.5 °C	±2.0 °C
N	-270 to +1300	0.1 °C	±0.5 °C
<b>Start Modes:</b>	Software programmable immediate start or delay start up to six months in advance		

<b>Real Time Recording:</b>	May be used with PC to monitor and record data in real time
<b>Memory:</b>	500,000 readings per channel, channels can be disabled to increase memory
<b>Reading Rate:</b>	4 readings every second up to 1 reading every 24 hours
<b>Calibration:</b>	Digital calibration through software
<b>Calibration Date:</b>	Automatically recorded within device
<b>Battery Type:</b>	9 Volt lithium or alkaline battery included, <b>user replaceable</b>
<b>Battery Life:</b>	18 months typical with display off. 3 months typical with continuous display use.
<b>Data Format:</b>	Date and time stamped °C, °F, K, °R, mV, V
<b>Time Accuracy:</b>	±1 minute/month
<b>Computer Interface:</b>	USB (Interface cable required); 115,2000 baud
<b>Software:</b>	XP SP3/Vista/Windows 7/Windows 8
<b>Operating Environment:</b>	-20 °C to +60 °C (-4 °F to +140 °F), 0 %RH to 95 %RH non-condensing
<b>Dimensions:</b>	7.24 in x 2.7 in x 1.39 in (183 mm x 68 mm x 36 mm)
<b>Material:</b>	Black anodized aluminum
<b>Weight:</b>	16.9 oz (480 g)
<b>Approvals:</b>	CE

**BATTERY WARNING:** FIRE, EXPLOSION, AND SEVERE BURN HAZARD. DO NOT SHORT CIRCUIT, CHARGE, FORCE OVER DISCHARGE, CRUSH, PENETRATE, OR INCINERATE. BATTERY MAY LEAK OR EXPLODE IF HEATED ABOVE 80 °C (176 °F).

## ORDERING INFORMATION

MODEL	DESCRIPTION
OCTTEMP2000	8 Channel Thermocouple Recorder
IFC200	Software, manual and USB interface cable
Calibration Certificate	Calibration Certificate available for data logger
U9VL-J	Replacement battery for OctTemp2000

**ASK ABOUT OUR OTHER DATA LOGGERS**

- Temperature
- Humidity
- Pressure
- pH
- Level
- Shock
- LCD Display
- Pulse/Event/State
- Current
- Voltage
- Wireless
- Intrinsically Safe
- Spectral Vibration
- Motion