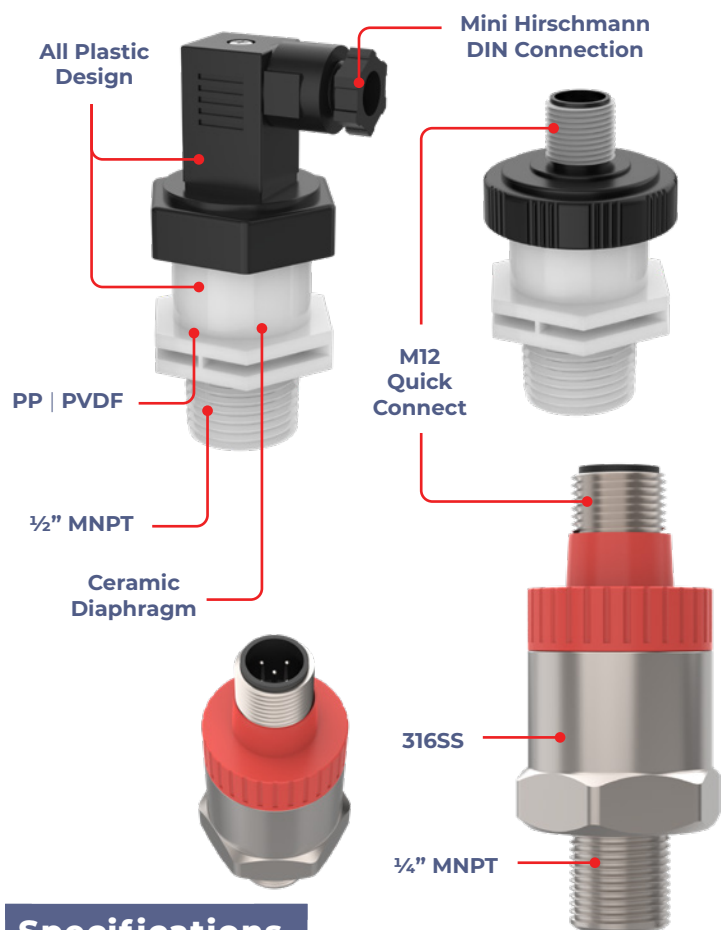


TruFlo® — LP50 Series

Pressure Sensor Transmitter | Switch

ICON™ Corrosion-Free
PROCESS CONTROLS Instrumentation Equipment

truFlo®



Specifications

| | |
|-------------------------|---------------------------------------------|
| Range* | 0-30psi 0-50psi 0-100psi 0-150psi * |
| Medium | H ₂ O Corrosive Liquid Gases |
| Accuracy | 0.5% F.S |
| Power Supply | 18 - 36VDC |
| Output Signal | 4-20mA 2 Wire 3 Wire |
| Medium Temperature | -35 – +85°C |
| Environment Temperature | -40 – +80°C |
| Store Temperature | -40 – +80°C |
| Temperature Effect | ±0.02% FS |
| Pressure Connection | ½" MNPT FNPT ¼" MNPT (SS) |
| Electrical Connection | Hirschmann DIN M12 Quick Connect |

*Please consult factory for alternative pressure ranges.

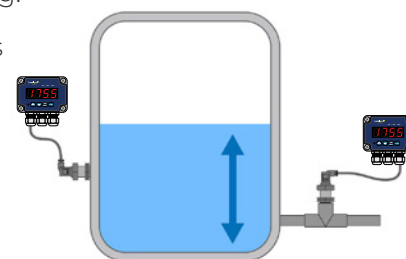


Features

- ✓ PP | PVDF | 316SS Body
- ✓ 0 – 30 | 0 – 50 | 0 – 100 | 0-150 Psi*
- ✓ 4-20mA Output | 2 Wire Loop Powered
- ✓ Ceramic Sensing Diaphragm
- ✓ 0.5% F.S | High Accuracy
- ✓ Excellent Chemical Resistance

The **LP50 Pressure Sensor Transmitter** was designed to measure pressure or level within industry's most demanding corrosive process applications. When measuring pressure It can be mounted vertically or horizontally, and can easily be installed into a threaded process pipe tee fitting.

The LP50 implements a state of the art ceramic measuring principle that changes the physical pressure (which equates to no more than a few microns), into a linear electronic signal that can be measured. This minimal deformation applies negligible material strain on the ceramic electronic pressure-sensing diaphragm, resulting in high resistance to alternating loads and long-term durability. Perfect for tough industrial applications.



Applications

- ✓ Chemicals
- ✓ Acids | Bases
- ✓ Tank Level
- ✓ Industrial Process Piping
- ✓ Vapor Pressure
- ✓ Leak Detection Equipment

Model Selection

| Size | Part Number | Material |
|---------|-------------|----------|
| ½" MNPT | LP50-PP-M-X | PP |
| ½" MNPT | LP50-PF-M-X | PVDF |
| ¼" MNPT | LP50-SS-M-X | 316SS |
| ½" FNPT | LP50-PP-F-X | PP |
| ½" FNPT | LP50-PF-F-X | PVDF |

X = Pressure Range

30 ▶ 0 - 30 Psi

50 ▶ 0 - 50 Psi

100 ▶ 0 - 100 Psi

150 ▶ 0 - 150 Psi

Consult Factory
for Alternative
Pressure Ratings

1.800.561.8187

www.itm.com

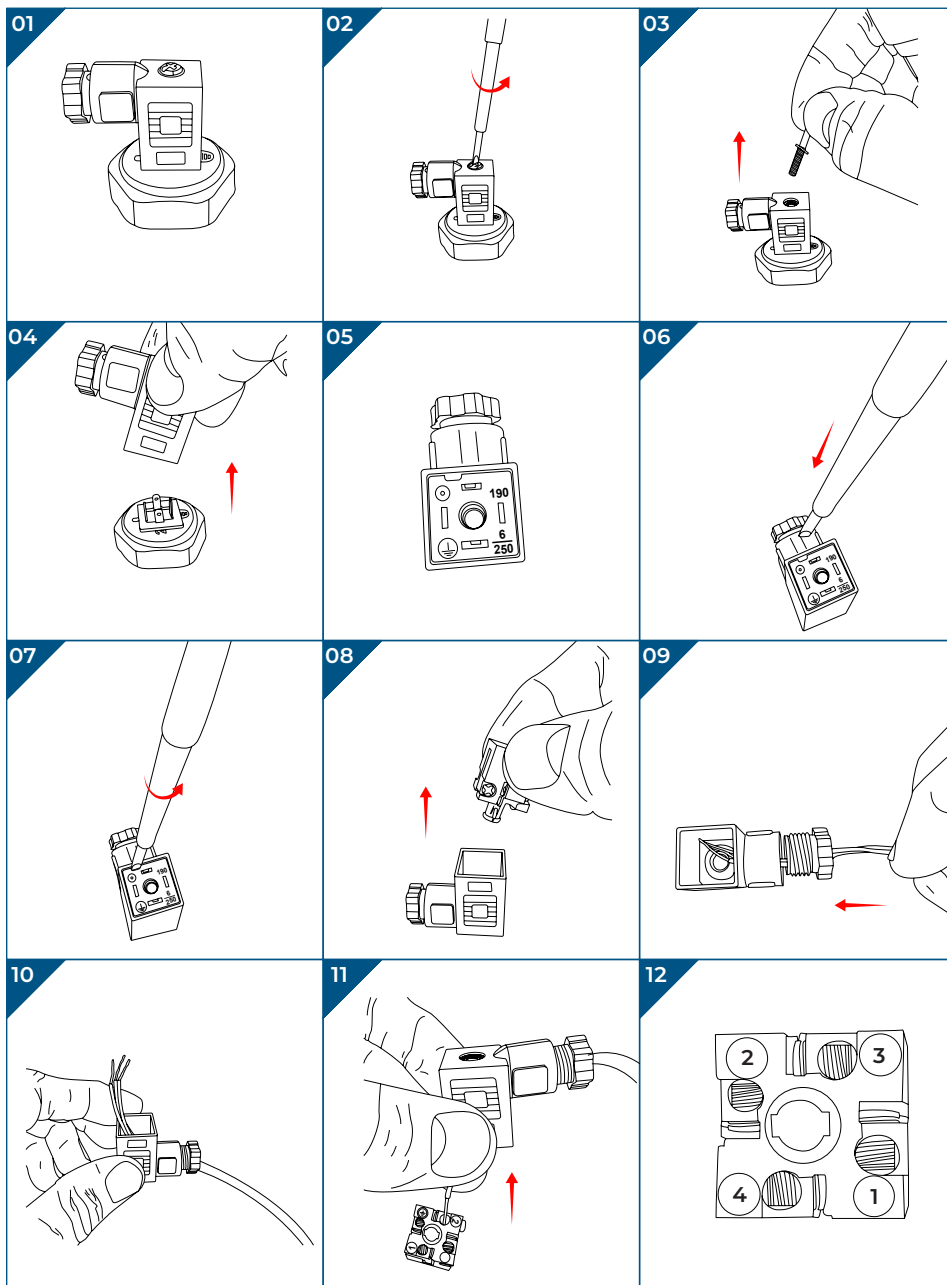
information@itm.com

Truflo® — LP50 Series

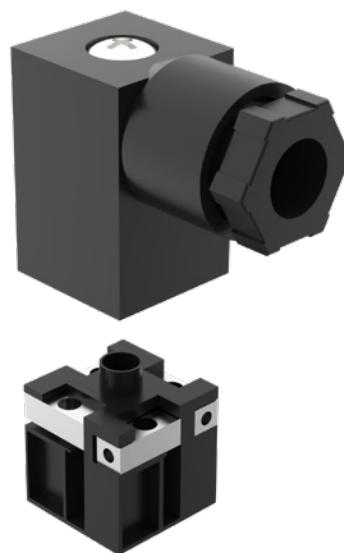
Pressure Sensor Transmitter | Switch

ICON™ Corrosion-Free
PROCESS CONTROLS Instrumentation Equipment

Hirschmann DIN Connection



truflo®



Pin 1: 4-20mA +
Pin 2: 4-20mA -
Pin 2: Ground

M12 Connection

Pin 1: 4-20mA + (Brown)
Pin 2: 4-20mA - (Blue)