



LB-Series

DC Load Banks w/ Monitoring Software

Eagle Eye's **LB-series** is specially designed for acceptance testing, discharge testing, battery capacity testing, battery maintenance, engineering examination and other testing for DC power with load. Our LB-Series is portable, durable, safe, easy to use and comes complete with our DataView software, providing the user with a complete data management and analysis program.

LB-Series FEATURES

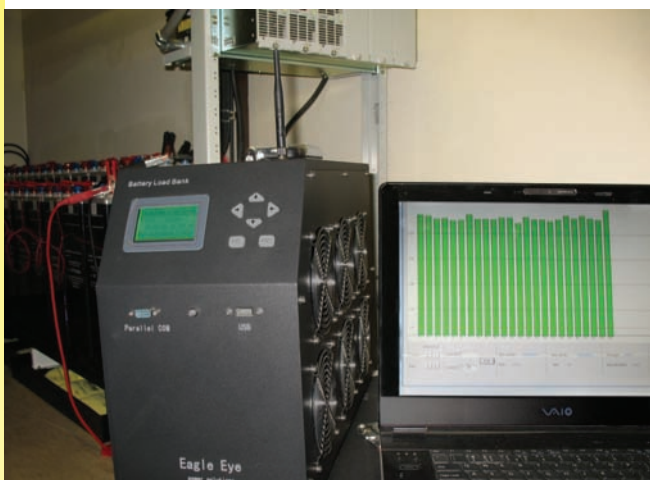
- Powerful management software for data analyzing and report printing
- Rugged, compact and portable unit with carrying case
- PTC ceramic resistor for safe discharging
- **4 settings for auto shut-down of discharge:** Discharge time, discharged capacity, cell cut-off voltage and total cut-off voltage
- Continued discharge available when certain cells



- AC & DC power supply modes for different needs
- Integrated functions for displaying, controlling and discharging
- Safe circuits avoids damage to battery when testing
- Direct USB drive for convenient data transfer to PC
- Warning info, dynamic discharge and static discharge data auto-saving
- **Optional:** Wireless communication for convenient discharge monitoring in PC
- **Optional:** Real-time display of voltage for each cell

Optional Data Acquisition Case (DAC)

Our LB-Series comes standard with the capability of monitoring the system voltage during discharge. We also offer optional "DAC" with any of our load banks which provide the wireless communication PER CELL to your main unit and PC. This means the voltage of EACH CELL will be displayed and recorded during discharge so you can evaluate the health of EACH CELL and replace only the cells that require replacement.



DataView Software Allows The User To Monitor Discharge & Recharge!

- voltage reach cut-off value
- Parallel connection of two units for mass discharge
- Thermal cut-off and automatic overload protection
- Auto sorting for lag-out batteries during discharging



LB-Series SPECIFICATIONS

| | |
|-------------------------|---|
| Main Voltage | 1). AC 220V/110V, 50/60Hz; 2). DC (from batteries discharged) |
| For battery type | 1.2V, 2V, or 2V, 6V and 12V |
| Discharging Current | Accuracy: 1% Resolution: 0.1A or 0.5% |
| Discharge Current Range | 0-500Amp* |
| Discharge Voltage Range | 10V-437V |
| Voltage Accuracy | 0.5% |
| Sampling Interval | 5s –1min |
| LCD Display | 128*64 pixel |
| Temperature | 0°C ~ 40°C |
| Humidity | 5% ~ 90% Relative humidity |
| Safety Standard | CE market, EMC standard |
| Dimension (Main Unit) | 17 x 8 x 12 in (Size: S) 21 x 8 x 15 in (Size: M) 23 x 10 x 18 in (Size: L) 25 x 17 x 29 in (Size: XL) |
| Weight (Main Unit) | 24.2 lbs (Size: S) 33.2 lbs (Size: M) 42.0 lbs (Size: L) 93.0 lbs (Size: XL) |

*Range dependant on specific model. Discharge current could also be higher with parallel connection of additional units.

ORDERING INFORMATION

| No. | Part # | Description |
|-----|-----------------|--|
| 1 | LB-24-300 | 24VDC, 0-300 Amp Battery Load Bank |
| 2 | LB-24/36/48-300 | 24/36/48VDC, 0-300 Amp Battery Load Bank |
| 3 | LB-24/48-200 | 24/48VDC, 0-200 Amp Battery Load Bank |
| 4 | LB-24/48-300 | 24/48VDC, 0-300 Amp Battery Load Bank |
| 5 | LB-48-100 | 48VDC, 0-100 Amp Battery Load Bank |
| 6 | LB-48-150 | 48VDC, 0-150 Amp Battery Load Bank |
| 7 | LB-48-300 | 48VDC, 0-300 Amp Battery Load Bank |
| 8 | LB-48-400 | 48VDC, 0-400 Amp Battery Load Bank |
| 9 | LB-48-500 | 48VDC, 0-500 Amp Battery Load Bank |
| 10 | LB-48/125-100 | 48/125VDC, 0-100 Amp Battery Load Bank |
| 11 | LB-48/125-200 | 48/125VDC, 0-200 Amp Battery Load Bank |
| 12 | LB-48/125-300 | 48/125VDC, 0-300 Amp Battery Load Bank |
| 13 | LB-48/240-100 | 48/240VDC, 0-100 Amp Battery Load Bank |
| 14 | LB-80-100 | 80VDC, 0-100 Amp Battery Load Bank |
| 15 | LB-125-100 | 125VDC, 0-100 Amp Battery Load Bank |
| 16 | LB-125-200 | 125VDC, 0-200 Amp Battery Load Bank |
| 17 | LB-125-300 | 125VDC, 0-300 Amp Battery Load Bank |
| 18 | LB-125/240-100 | 125/240VDC, 0-100 Amp Battery Load Bank |
| 19 | LB-125/240-150 | 125/240VDC, 0-150 Amp Battery Load Bank |
| 20 | LB-240-150 | 240VDC, 0-150 Amp Battery Load Bank |
| 21 | LB-380-50 | 380VDC, 0-50 Amp Battery Load Bank |
| 22 | LB-380-100 | 380VDC, 0-100 Amp Battery Load Bank |

*Add "DAC" to this part number if you prefer the data acquisition case for wireless monitoring PER CELL.

Note: All units can be ordered with or without "DAC" (wireless monitoring per cell)

Kit Includes:

- LB-Series Load Bank
- Portable Carrying Case
- Data Communication Terminal
- Red & Black Load Cables
- Voltage Test Lead w/Two Clamps
- Antennae
- Power Cord
- DataView Software
- USB Drive
- User Manual
- **Optional: DAC (wireless monitoring data acquisition), Data Acquisition Leads