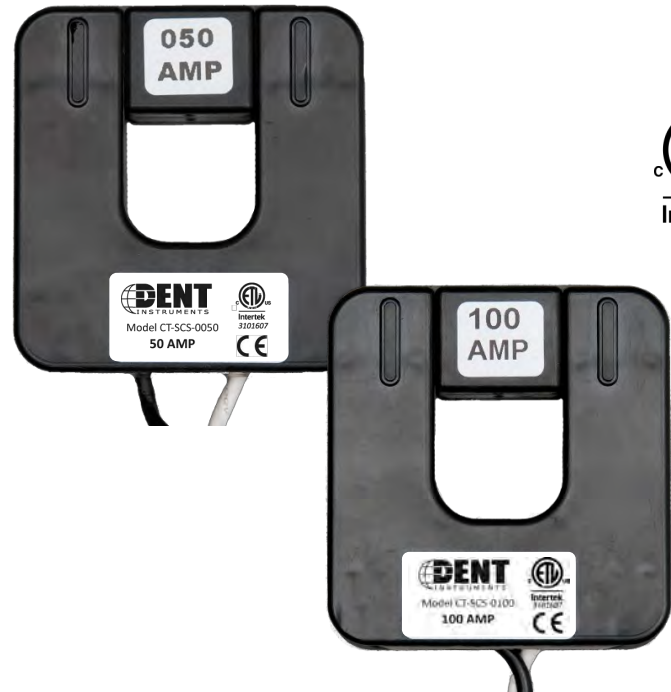


50A/100A SMALL SPLIT CORE CURRENT TRANSFORMERS



Split-core current transformers provide linear output voltage that is directly proportional to the input current. These transformers are safely and easily installed over existing electrical power lines without disconnecting the lines or interrupting service.

DENT's energy monitoring components are used for a variety of applications including building automation, tenant submetering, performance verification, energy management, and new technology assessment.



KEY SPECIFICATIONS

| | |
|---------------|--|
| Window Size | 0.75" (1.90 cm) |
| Current Range | 50A Model: 5 - 65A AC 100A Model: 2 - 130A AC |
| Output | 333 mV at rated current |
| Ratio Error | <1% at rated current (typical) |
| Phase Error | <2° at rated current (typical) |

ELECTRICAL

| | |
|-----------------|---|
| Output | 333 mV at rated current |
| Wire Polarity | White = Hi, positive (+) Black = Low, negative (-) |
| Frequency Range | 50 to 400 Hz |

MECHANICAL

| | |
|-----------------------|----------------------------------|
| Case Material | Epoxy encapsulated housing |
| Leads | 2.7 M (8'), twisted pair, 20 AWG |
| Operating Temperature | -20° to 55°C (-4° to 131°F) |

SAFETY

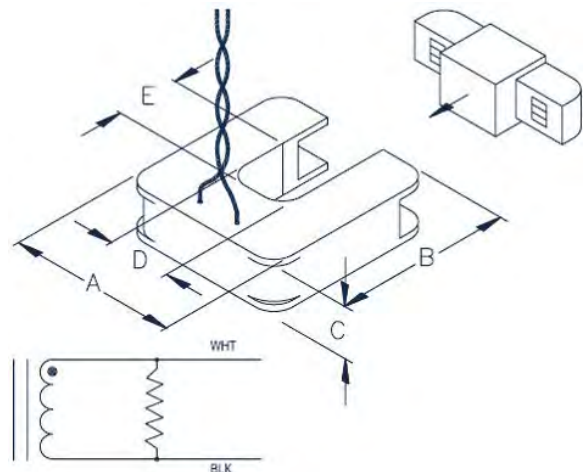
| | |
|---------------------|---|
| Working Voltage | 600 VAC, Category III |
| Dielectric Strength | 5000 VAC around case 600V rated leads |
| Certification | Conforms to: UL STD 61010-1 EN 60044-1 Certified to: CAN/CSA STD C22.2 No. 61010-1 |



PART NUMBERS

| | |
|-----------------|-----------------------|
| CT-SCS-0050-U/B | 50A Small Split Core |
| CT-SCS-0100-U/B | 100A Small Split Core |

| DENT P/N | NOMINAL RATING (Amps) | USEFUL CURRENT RANGE (Amps) | DIMENSIONS | | | | |
|-------------|-----------------------|-----------------------------|----------------|----------------|----------------|-----------------|-----------------|
| | | | A | B | C | D | E |
| CT-SCS-0050 | 50 | 5 - 65 | 5.08 cm (2.0") | 5.34 cm (2.1") | 1.55 cm (0.6") | 1.90 cm (0.75") | 1.90 cm (0.75") |
| CT-SCS-0100 | 100 | 2 - 130 | | | | | |



All specifications contained in this document are subject to change without notice.
© DENT INSTRUMENTS, INC.
rev041014