

Temp1000Ex

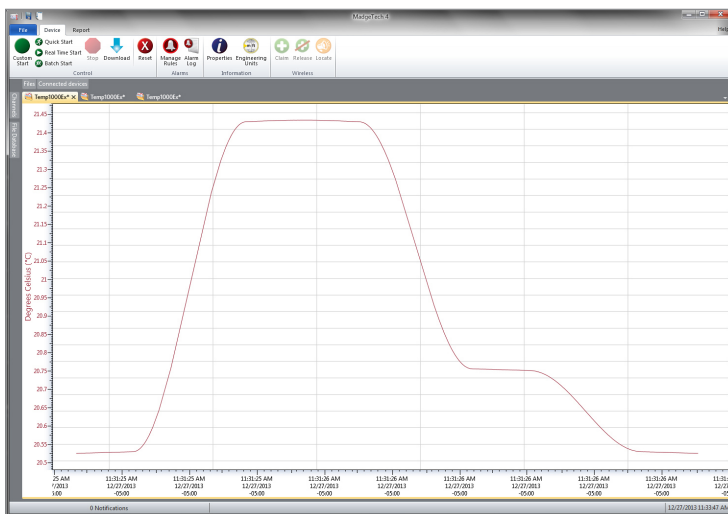
Intrinsically Safe Temperature Data Logger

The Temp1000Ex is an Intrinsically Safe temperature data logger. It carries hazardous location, intrinsically safe certification in accordance with the latest issue of IECEx 60079-0, IECEx 60079-11 and Directive 2014/34/EU (known as ATEX).

The device can be started and stopped directly from your computer and its small, sleek size allows it to fit almost anywhere. The Temp1000Ex makes data retrieval quick and easy. Simply insert the device into the IFC400 or the IFC406 USB docking station (sold separately) and our user-friendly software does the rest. The small size of the Temp1000Ex, allows it to be placed in remote or hard to reach locations. The device features a battery life indicator allowing users to easily identify low voltage and change batteries when required. This feature maximizes the use of your battery life and is a cost saving efficiency.

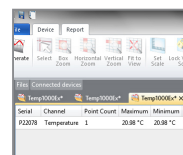
The MadgeTech Software is a powerful, analytic tool, available to download for free from our website madgetech.com. Data can be viewed in graphical or tabular formats and summary and statistics views are available for further analysis.

MadgeTech 4 Software Features

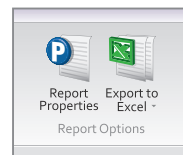


Graph View

- Multiple graph overlay
- Statistics
- Digital calibration
- Zoom in/ zoom out
- Lethality equations (F0, PU)
- Mean Kinetic Temperature
- Full time zone support
- Data annotation
- Min./Max./Average lines
- Summary view



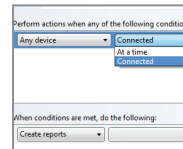
Statistics



Export to Excel

Time	Time Zone	Data
11:31:25 PM	-04:00	-00:00:00
11:31:26 PM	-04:00	-00:01:00
11:31:27 PM	-04:00	-00:02:00
11:31:28 PM	-04:00	-00:03:00
11:31:29 PM	-04:00	-00:04:00
11:31:30 PM	-04:00	-00:05:00
11:31:31 PM	-04:00	-00:06:00
11:31:32 PM	-04:00	-00:07:00
11:31:33 PM	-04:00	-00:08:00
11:31:34 PM	-04:00	-00:09:00
11:31:35 PM	-04:00	-00:10:00
11:31:36 PM	-04:00	-00:11:00
11:31:37 PM	-04:00	-00:12:00
11:31:38 PM	-04:00	-00:13:00
11:31:39 PM	-04:00	-00:14:00
11:31:40 PM	-04:00	-00:15:00

Tabular Data View



Automation



Features

- Rugged
- Reusable
- Programmable Start Time
- 316 Stainless Steel Enclosure
- User-friendly
- Low Cost
- CE Compliant
- Optional Key Ring End Cap

Certified Intrinsically Safe

- Electrical Protection Concepts:
IEC: 60079-11 Ex ia – Ex ic, Intrinsic Safety Zones 0-2
- Equipment Protection Level:
Ga – Gc, Zones 0-2
- Gas Groups: IIC
- Temperature Class: T4

Benefits

- Simple Setup and Installation
- Minimal Long-Term Maintenance
- Long-Term Field Deployment

Applications

- EtO Sterilization
- Implement HACCP Programs
- Food Preparation and Processing
- Environmental Studies
- Well Monitoring
- Dishwasher Testing
- Hazardous and Hostile Environment Monitoring
- Medical and Pharmaceutical

SPECIFICATIONS

TEMPERATURE	
Temperature Sensor	Resistance Temperature Detector (RTD)
Temperature Range	-40 °C to +80 °C (-40 °F to +176 °F)
Temperature Resolution	0.01 °C (0.018 °F)
Calibrated Accuracy	±0.5 °C (0 °C to ±50 °C), ±0.9 °F (32 °F to 122 °F)

GENERAL	
Start Modes	Software programmable immediate start or delay start up to 24 months in advance
Real Time Recording	May be used with PC to monitor and record data in real time (PC interface not IS rated)
Password Protection	Yes
Memory	65,536 Readings
Wrap Around	Yes
Reading Rate	1 reading every second up to 1 reading every 24 hours
Calibration	Digital calibration through software
Calibration Date	Automatically recorded within device and displayed in software
Battery Type	Tadiran TL-2150/S 3.6V lithium battery included, user replaceable in a non-hazardous location
Battery Life	2 years typical at 15 minute reading rate
Time Accuracy	10 seconds / month (at 0 °C to 50 °C)
Data Format	Date and time stamped °C, °F, K, °R
Computer Interface	IFC400 or IFC406
Operating System Compatibility	Windows XP SP3 or later

Software Compatibility	Standard Software version 4.2.17.0 or later Secure Software version 4.2.16.0 or later
Operating Environment	-40 °C to +80 °C (-40 °F to +176 °F) 0 %RH to 100 %RH (case properly sealed)
Dimensions	Without Keyring: 1 inch probe: 2.66 in x 0.97 in dia. (67.6 mm x 24.6 mm dia.) 2 inch probe: 3.94 in x 0.97 in dia. (100.1 mm x 24.6 mm dia.) 5.25 inch probe: 7.19 in x 0.97 in dia. (182.6 mm x 24.6 mm dia.) 7 inch probe: 8.94 in x 0.97 in dia. (227.1 mm x 24.6 mm dia.) With Keyring: 1 inch probe: 2.97 in x 0.97 in dia. (75.4 mm x 24.6 mm dia.) 2 inch probe: 4.26 in x 0.97 in dia. (108.3 mm x 24.6 mm dia.) 5.25 inch probe: 7.52 in x 0.97 in dia. (200.0 mm x 24.6 mm dia.) 7 inch probe: 9.26 in x 0.97 in dia. (235.1 mm x 24.6 mm dia.)
Weight	Without Keyring: 1 inch probe: 2.1 oz (60 g) 2 inch probe: 2.4 oz (68 g) 5.25 inch probe: 2.7 oz (76 g) 7 inch probe: 2.8 oz (78 g) With Keyring: 1 inch probe: 1.9 oz (55 g) 2 inch probe: 2.2 oz (63 g) 5.25 inch probe: 2.5 oz (71 g) 7 inch probe: 2.7 oz (75 g)
Material	316 Stainless Steel/Radel
IP Rating	Not Rated Caution: Do not submerge this product to retain IS rating
Approvals	CE ATEX Certificate #: 19ATEX0126 IECEx Certificate #: BAS 19.0109

BATTERY WARNING: FIRE, EXPLOSION, AND SEVERE BURN HAZARD. DO NOT SHORT CIRCUIT, CHARGE, FORCE OVER DISCHARGE, DISASSEMBLE, CRUSH, PENETRATE OR INCINERATE. BATTERY MAY LEAK OR EXPLODE IF HEATED ABOVE 80 °C (176 °F).

Ordering Information

Temp1000Ex-1	PN 902155-00	Intrinsically Safe Temperature Data Logger with 1 in probe
Temp1000Ex-2	PN 902153-00	Intrinsically Safe Temperature Data Logger with 2 in probe
Temp1000Ex-5.25	PN 902156-00	Intrinsically Safe Temperature Data Logger with 5.25 in probe
Temp1000Ex-7	PN 902157-00	Intrinsically Safe Temperature Data Logger with 7 in probe
Temp1000Ex-1-KR	PN 902209-00	Intrinsically Safe Temperature Data Logger with 1 in probe and key ring end cap
Temp1000Ex-2-KR	PN 902210-00	Intrinsically Safe Temperature Data Logger with 2 in probe and key ring end cap
Temp1000Ex-5.25-KR	PN 902211-00	Intrinsically Safe Temperature Data Logger with 5.25 in probe and key ring end cap
Temp1000Ex-7-KR	PN 902212-00	Intrinsically Safe Temperature Data Logger with 7 in probe and key ring end cap
IFC400	PN 900319-00	Docking station with USB cable
IFC406	PN 900325-00	6 Port, Multiplexer docking station with USB cable
TL-2150/S	PN 901745-00	Replacement battery for the Temp1000Ex and Temp1000Ex-KR