

# HiTemp140-FP

## High Temperature Data Logger with a Flexible RTD Probe

The HiTemp140-FP is a durable, user friendly high temperature data logger featuring a long, flexible RTD probe with a narrow diameter, making it ideal for use in steam sterilization and lyophilization processes. Commonly used for mapping, validation and monitoring of high temperature surfaces and environments, this stainless steel data logger is available in several models. The flexible probe is coated with PFA insulation and can withstand temperatures up to 260 °C with an accuracy of  $\pm 0.1$  °C. The HiTemp140-FP probe design is narrow and lightweight making it ideal for placement within small vials, tubing, test tube and other small diameter or delicate applications.

Using the latest MadgeTech Software, starting, stopping and downloading the HiTemp140-FP is simple and easy. To use, simply place the HiTemp140-FP in the IFC400 or IFC406 docking station (sold separately). Using the software, an immediate or delay start can be chosen, as well as the reading rate. Start the data logger, remove it from the docking station and the device is ready to be deployed. Graphical, tabular and summary data is provided for analysis and data can be viewed in °C, °F, K or °R. The data can also be automatically exported to Excel® for further calculations.



### Features

- $\pm 0.1$  °C (0.18 °F) Accuracy
- Probe Operates up to 260 °C
- Submersible (IP68)
- User-Replaceable Battery
- Durable
- Programmable Start and Stop Time
- Four probe lengths: 6, 12, 36 and 72 inches
- Battery life indicator

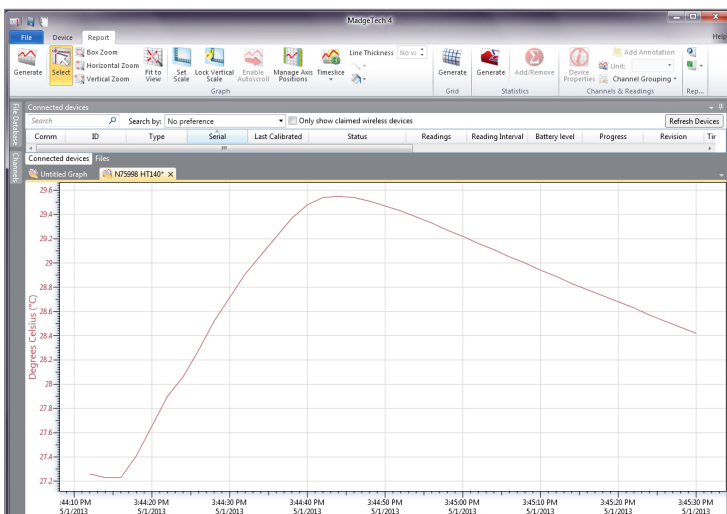
### Benefits

- Simple Setup and Installation
- Minimal Long-Term Maintenance
- Long-Term Field Deployment

### Applications

- Autoclave Verification and Mapping
- Lyophilization
- Monitoring High-Temperature Surfaces
- Container Mapping
- Measurements Inside Small Vials and Tubing

### MadgeTech 4 Software Features

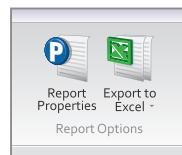


Graph View

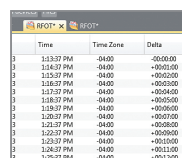
- Multiple graph overlay
- Statistics
- Digital calibration
- Zoom in/ zoom out
- Lethality equations (F0, PU)
- Mean Kinetic Temperature
- Full time zone support
- Data annotation
- Min./Max./Average lines
- Summary view



Cooling Flags

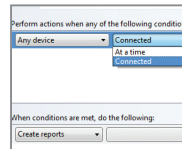


Export to Excel



	Time	Time Zone	Delta
1	3:43:37 PM	-0400	-00:00:00
2	3:43:37 PM	-0400	+00:01:00
3	3:43:37 PM	-0400	+00:02:00
4	3:43:37 PM	-0400	+00:03:00
5	3:43:37 PM	-0400	+00:04:00
6	3:43:37 PM	-0400	+00:05:00
7	3:43:37 PM	-0400	+00:06:00
8	3:43:37 PM	-0400	+00:07:00
9	3:43:37 PM	-0400	+00:08:00
10	3:43:37 PM	-0400	+00:09:00
11	3:43:37 PM	-0400	+00:10:00
12	3:43:37 PM	-0400	+00:11:00
13	3:43:37 PM	-0400	+00:12:00

Tabular Data View



Automation

## SPECIFICATIONS

TEMPERATURE	
Temperature Sensor	Flexible RTD Probe
Probe Measurement Range	-60 °C to +260 °C (-76 °F to 500 °F)
Temperature Resolution	0.01 °C (0.02 °F)
Calibrated Accuracy	±0.1 °C (0.18 °F)

GENERAL		
Start Modes	Software programmable immediate start Delay start up to 18 months in advance	
Stop Modes	Manual or Timed (specific date and time)	
Data Logger Response Time	In Air	In Water
	(hours : minutes : seconds : fractions of a second)	
	t <sub>60</sub> - 00:00:30:00 t <sub>90</sub> - 00:01:10:00	t <sub>60</sub> - 00:00:03:50 t <sub>90</sub> - 00:00:06:50
Trigger Settings	High and Low limits may be set. Once data meets or exceed sets limits, the device will record to memory. Bi-level start and stop triggers can also be programmed. Users can specify the number of readings to take after the device triggers	
Readings in Trigger Settings Mode	21,845 readings	
Real Time Recording	May be used with PC to monitor and record data in real time	
Password Protection	An optional password may be programmed into the device to restrict access to configuration options. Data may be read out without the password	
Memory	65,536 readings	
Wrap Around	Yes	
Reading Rate	4 readings per second up to 1 reading every 24 hours	

Calibration	Digital calibration through software
Calibration Date	Automatically recorded within device
Battery Type	3.6V high-temperature lithium battery included; user replaceable
Battery Life	1 year typical (1 minute reading rate at 25 °C/ 77 °F)
Data Format	Date and time stamped °C, K, °F or °R
Time Accuracy	±1 minute/month at 25 °C Extended Operation: ±20 minutes/month at 140 °C (±450 ppm)
Computer Interface	IFC400 OR IFC406 USB docking station required; 125,000 baud
Operating System Compatibility	Windows XP SP3 or later
Software Compatibility	MadgeTech Standard Software version 4.2.1.1 or later MadgeTech Secure Software version 4.2.0.1 or later
Operating Environment	-40 °C to +140 °C (-40 °F to +284 °F) 0 %RH to 100 %RH, 0.002 PSIA to 60 PSIA
IP Rating	IP68
Dimensions (Body)	2.95 in x 0.97 in x 0.97 in (75 mm x 24.6 mm x 24.6 mm)
Dimensions (Probe)	HiTemp140-FP-6: 6 in x 0.10 in (152.5 mm x 2.5 mm) HiTemp140-FP-12: 12 in x 0.10 in (304.8 mm x 2.5 mm) HiTemp140-FP-36: 36 in x 0.10 in (914 mm x 2.5 mm) HiTemp140-FP-72: 72 in x 0.10 in (1829 mm x 2.5 mm)
Weight	3 oz (85 g)
Material	Body: 316 Stainless Steel Probe: PFA Insulated Cable
Approvals	CE

**BATTERY WARNING:** FIRE, EXPLOSION, AND SEVERE BURN HAZARD. DO NOT SHORT CIRCUIT, CHARGE, FORCE OVER DISCHARGE, CRUSH, PENETRATE, OR INCINERATE. BATTERY MAY LEAK OR EXPLODE IF HEATED ABOVE 150 °C (302 °F).

### Notice: Steam Sterilization Applications

The pervasive nature of pressurized steam creates a very difficult environment for electronics. Please refer to the following preventative maintenance procedure when using this device in steam sterilization applications. Additionally, this device is not ideal for steam sterilization applications above 121 °C/1.1 bar.

### PREVENTATIVE MAINTENANCE

After every 3 hours of steam exposure:

1. Remove the endcap and battery from the device (ref. battery change procedure on Product User Guide)
2. Place open logger (minus battery) in an oven at 120 °C (250 °F) for a minimum of 30 minutes
3. Remove logger from oven and allow to cool to room temperature
4. Re-assemble the logger with the battery (note polarity) and endcap

### Ordering Information

HITEMP140-FP-6	PN 902003-00	High Temperature Data Logger with a 6 inch flexible probe
HITEMP140-FP-12	PN 900211-00	High Temperature Data Logger with a 12 inch flexible probe
HITEMP140-FP-36	PN 900212-00	High Temperature Data Logger with a 36 inch flexible probe
HITEMP140-FP-72	PN 900218-00	High Temperature Data Logger with a 72 inch flexible probe
IFC400	PN 900319-00	Docking station with USB cable
IFC406	PN 900325-00	6 Port, Multiplexer docking station with USB cable
ER14250MR-145	PN 900097-00	Replacement battery for the HiTemp140-FP