



KANOMAX
The Ultimate Measurements

Anemomaster™

Professional / Standard

Multi-function hot-wire anemometer with telescopic, articulating probe

Anemomaster™ now comes in Professional and Standard versions. The Professional model has built-in datalogging and a PC communications cable. The Standard is a affordable alternative for the contractor seeking an economical, but still highly accurate instrument. The articulating probe has been improved with enhanced durability. The new design flexes easily and will last for many years. The telescoping feature of the probe makes it easy to take traverse measurements at ceiling ducts and other hard to reach places.

Applications

- HVAC Testing
- Facility Maintenance
- Critical Environment Certificate
- IAQ Investigations



Features & Benefits

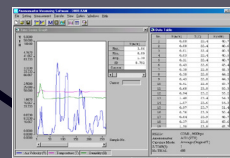
- Sleek, ergonomical design with an anti-slip grip and highly visible backlit display.
- Research quality at a contractor-friendly price.
- Now equipped with an automatic atmospheric pressure compensation function for precise airflow measurement
- Telescopic, articulating probe simplifies the measuring process.
- Simultaneously measures and displays air velocity, air temperature, airflow rate, and pressure.
- Extended 2 year warranty.
- Airflow rate calculation based on registered duct size
- Generous datalogging capacity and the USB interface makes it easy to upload to your PC or laptop (up to 1500 records, only for Model 6036).
- Windows 7 compatible software is included.
- Optional hands-free carrying case is available.
- Includes telescopic probe with 79 in (200cm) cable, Data processing software, USB cable, AC adapter, 6 pcs. AA batteries, carrying case, and NIST Certificate



Hands-free Case
now available!



Telescopic, articulating probe



Data Processing Software

Anemomaster™ Series Specifications

Model		Anemomaster™ Professional Model 6036	Anemomaster™ Standard Model 6035
Probe Type		Telescopic and Articulating tip	Telescopic
Air Velocity	Range Accuracy Resolution	20 to 6000 FPM (0.01 to 30.0 m/s) +/- 3.0% of reading or 0.015 m/s whichever is greater 0.01 m/s (0.01 to 9.99 m/s), 0.1 m/s (10.0 to 30.0 m/s)	
Volumetric Flow Rate		9031 CFM (at 20 FPM) 2709360 CFM (at 6000 FPM)	
Duct Size Input Range		0 to 2550 mm 0 to 255 inches	
Temperature	Range Accuracy Resolution	-4 to 158°F (-20 to 70°C) +/- 1°F (0.5°C) 1°F (0.1°C)	
Pressure (Option)	Range Accuracy Resolution	-5.00 to +5.00 kPa +/- (3% of reading + 0.01) kPa 0.01 kPa	
Interface	Digital	USB and RS232C (for print-out)	RS232C (for print-out)
	Analog (Option)	DC 0 to 3 V (only for air velocity measurements)	
Data Storage Capacity		Up to 1500 records	n/a
Power Supply		6 x AA batteries or AC Adapter	
Operation Range	Main Unit Probe Storage	41 to 104°F (5 to 40°C) with no visible condensation -4 to 158°C (-20 to 70°C) with no visible condensation 14 to 122°C (-10 to 50°C) with no visible condensation	
Weight		0.9 lbs (400 g)	
Dimensions	Main Body Probe	3.4 x 7.4 x 1.6 inches (88 x 188 x 41 mm) Probe Length: 39.4 inches (1000 mm) - Telescopic Probe Diameter of Tip: 0.24 inches (6.1 mm)	
Warranty		2 years	

Specifications are subject to change without notice.



KANOMAX
The Ultimate Measurements

Kanomax USA, Inc.
P.O. Box 372
219 US Hwy 206, Andover, NJ 07821 U.S.A.
TEL: 1-800-247-8887 (USA) / 1-973-786-6386
FAX: 1-973-786-7586
E-mail: info@kanomax-usa.com
URL: www.kanomax-usa.com



Distributed by:

