

KWIK-SPIN+™ Hand Spinner Instructions

⚠ WARNING



Wear appropriate protective equipment including safety glasses and leather gloves. Drains may contain hazardous chemicals or bacteria.

If you have any question concerning this RIDGID® product:

- Contact your local RIDGID distributor.
- Visit RIDGID.com to find your local RIDGID contact point.
- Contact RIDGID Technical Services Department at rtctechservices@emerson.com, or in the U.S. and Canada call (800) 519-3456.

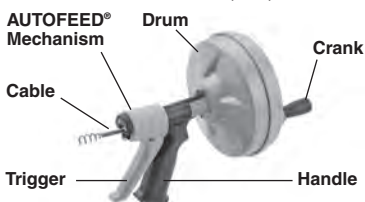


Figure 1 – KWIK-SPIN+™ Hand Spinner

Specifications

The KWIK-SPIN+™ Hand Spinner cleans drain lines up to 1½" in diameter. It is not recommended for toilets. The cable is positively retained in the drum to prevent cable pullout.

Before Use

Inspect KWIK-SPIN+™ Hand Spinner. Do not use if damaged. Inspect the drain. Determine if chemicals are present. Some chemicals have specific health and handling considerations that should be provided by the manufacturer. Confirm KWIK-SPIN+™ hand spinner is appropriate for the job.

Drain Access

- Thread through crosshairs (Figure 2).
- Unscrew cleanout plug or remove trap (Figure 3).

- Pop-up Drain: Remove lift rod and drain plug (Figure 4).
- Bathtub overflow: Remove overflow plate and internal mechanism (Figure 5).

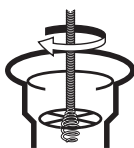


Figure 2

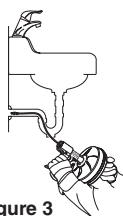


Figure 3



Figure 4

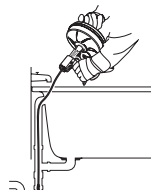


Figure 5

Operating Instructions

1. Insert cable into drain. Position unit as close to drain as possible. Squeeze trigger to engage the AUTOFEED® mechanism.

2. Turning drum clockwise advances cable. Counter-clockwise retracts cable.

Cable can also be rapidly advanced/retracted by hand.

Advance cable until you encounter the blockage (Figure 6).

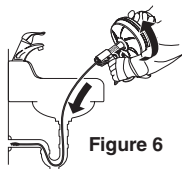


Figure 6

3. Work cable through blockage. DO NOT force cable. Work cable back and forth 2-3 times.
4. Retract cable (Figure 7). After flow is established, if possible run water to clear debris and clean cable (Figure 8).
5. Rinse cable and drum. Air dry before storage to prevent rust.



Figure 7

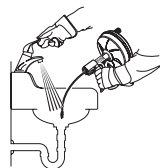


Figure 8