

CUSTOM STRIPMASTER[®] AND CUSTOM STRIPMASTER[®] LITE WIRE STRIPPERS

UNIQUE BLADE DESIGN | ONE-STEP SPRING ACTION |
STURDY METAL FRAME



THE ELECTRICIAN'S
CHAMPION™ **IDEAL**®

1.800.561.8187

www.**itm**.com

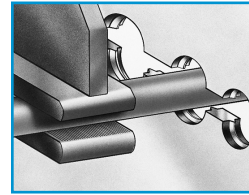
information@itm.com

CUSTOM STRIPMASTER® WIRE STRIPPERS

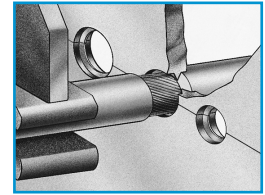
The Custom Stripmaster® Wire Stripper has set the industry standard in hand-held, precision wire strippers for fast, accurate wire stripping with its one-step, squeeze-action stripping and unique precision blade design.

This light-weight stripper, made from sturdy die-cast zinc, is designed for maximum mobility and high productivity in all types of commercial and precision stripping applications.

The Custom Stripmaster® Wire Stripper offers extra leverage with its spring-action mechanical design for reduced operator effort. It can be customized with your choice of gripper pads and blade sets to match your stripping requirements. Optional short-stop latch and transparent wire stop increases tool versatility and insures consistent strip lengths.



Gripper pads hold the wire securely in a centerline relationship with the blade.

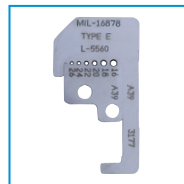


Die-type blades incorporate a counterbored hole sized to the insulation and an inner cutting hole sized to the conductor. This varies depending on insulation type and thickness.

Features and Benefits

- Meets SAE-AS5768 Standards

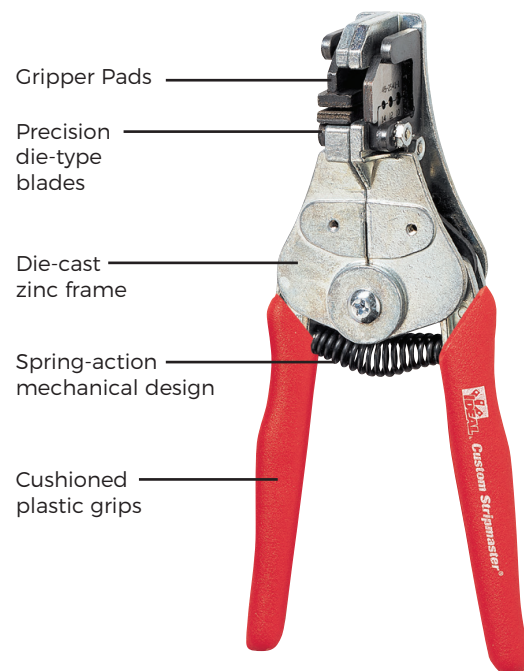
- **Precision counter-bored die-type** blades meet Military Stripping Specifications. An outer counter-bore hole, sized to the insulation while the inner-hole cuts the insulation, but doesn't contact the conductor during stripping.



- **Strip from 10 to 30 AWG** solid and stranded wire with matched, precision blades that meet Military Specifications and assure nick-free wire stripping time after time.



- **One-step stripping action** grips, cuts and removes the wire insulation with one squeeze. Our unique spring-action design provides a mechanical advantage to reduce the effort required for each strip, and returns the tool to its original setting, ready for the next strip.



CUSTOM STRIPMASTER® LITE WIRE STRIPPERS

The **Custom Stripmaster® Lite Wire Stripper** marks the beginning of a new era of light-weight, precision wire strippers designed specially for improved operator comfort.

It utilizes the same type of precision blade design as its larger brothers and features an optional short-stop latch and transparent wire stop.

Built of sturdy die-cast zinc, this little stripper weighs 50% less than its full-sized counterparts, and will impress you with both its ease of operation and durable performance.

Features and Benefits

- Meets SAE-AS5768 Standards

- **At 3/4's of the size** of the Custom Stripmaster®, its compact size more comfortably fits the human hand. A much shorter stroke is also required for a complete strip, which increases wire stripping productivity.



- **Requiring 1/3 less hand pressure** for each stripping action.

- **Strips 16 to 30 AWG**, solid or stranded wire. Choose from a wide selection of precision blade configurations or contact the factory for custom blades to match your needs.





Custom Stripmaster® Wire Strippers and Die-Type Blades (inches)

Wire Range Covered											Stripper Part No.	Blade Only Part No.
Wire Size AWC												
30	28	26	24	22	20	18	16	14	12	10		
For Type E Teflon® (600V)												
								.	.	.	45-176	L-5559
					45-177	L-5560
.	.	.									45-178	L-5561
For Type EE Teflon® (1000V)												
								.	.	.	45-173	L-5562
					45-174	L-5563
.	.	.									45-175	L-5564
For Other Misc. Insulations												
								.	.	.	45-170	L-5210
					45-171	L-5211
.	.	.									45-172	L-5436
For Wire Wrap & Other Thin Insulated Wire												
.								Three identical holes			45-179	L-7625
.	.	.	.					Solid Wires			45-169	L-9300

The 45-170 Series is a Custom Stripmaster® Wire Stripper frame without the short stop latch and wire stop.

45-169 includes grip-type pads (standard)

Custom Stripmaster® Wire Strippers and Die-Type Blades (millimeters)

Wire Range Covered											Stripper Part No.	Blade Only Part No.
Wire Size AWC												
.05	.08	0.13	0.2	0.22	0.5	1.0	1.5	2.5	4.0	6.0		
For Type E Teflon® (600V)												
								.	.	.	45-176	L-5559
					45-177	L-5560
.	.	.									45-178	L-5561
For Type EE Teflon® (1000V)												
								.	.	.	45-173	L-5562
					45-174	L-5563
.	.	.									45-175	L-5564
For Other Misc. Insulations												
								.	.	.	45-170	L-5210
					45-171	L-5211
.	.	.									45-172	L-5436
For Wire Wrap & Other Thin Insulated Wire												
.								Three identical holes			45-179	L-7625
.	.	.	.					Solid Wires			45-169	L-9300

Teflon® is a registered trademark of E. I. du Pont de Nemours and Company.



Custom Stripmaster® Lite Wire Strippers and Die-Type Blades (inches)

Wire Range Covered								Stripper Part No.	Blade Only Part No.
Wire Size AWC									
30	28	26	24	22	20	18	16		
MIL-W-16878 Type E Teflon® (600V)									
				45-638	LB-918
				45-639	LB-919
.	.	.	.					45-640	LB-920
MIL-W-16878 Type EE Teflon® (1000V)									
				45-635	LB-915
				45-636	LB-916
.	.	.	.					45-637	LB-917
General Purpose									
				45-632	LB-912
				45-633	LB-913
.	.	.	.					45-634	LB-914
Wire Wrapping (Thin Insulation Solid Wire)									
.						Four holes, same size		45-641	LB-921
.	.	.	.			Solid Wires		45-631	LB-911

Custom Stripmaster® Lite Wire Strippers and Die-Type Blades (millimeters)

Wire Range Covered								Stripper Part No.	Blade Only Part No.
Wire Size AWC									
1,5	1,0	0,5	0,22	0,2	0,13	0,08	0,05		
MIL-W-16878 Type E Teflon® (600V)									
.	.	.	.					45-638	LB-918
				45-639	LB-919
			45-640	LB-920
MIL-W-16878 Type EE Teflon® (1000V)									
.	.	.	.					45-635	LB-915
				45-636	LB-916
			45-637	LB-917
General Purpose									
.	.	.	.					45-632	LB-912
				45-633	LB-913
			45-634	LB-914
Wire Wrapping (Thin Insulation Solid Wire)									
		Four holes, same size					.	45-641	LB-921
			Solid Wires	45-631	LB-911

Teflon® is a registered trademark of E. I. du Pont de Nemours and Company.

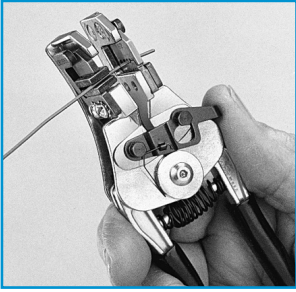
MIL-SPEC APPLICATION GUIDE

	Custom Stripmaster®			Custom Stripmaster® Lite		
	Hand Tool w/ Blade	Replacement Blade Only	Wire Range AWG	Hand Tool w/ Blade	Replacement Blade Only	Wire Range AWG
5 MDI AIRFRAME TYPE A&B	45-2691	45-2691-1	10-14	N/A 45-2685	N/A 45-2685-1	N/A 16-24
5 MDI HOOK-UP TYPE C	45-2694	45-2694-1	10-14	N/A 45-2693 45-2692	N/A 45-2693-1 45-2692-1	N/A 16-22 20-26
AD	45-2824 45-2825	48-2824-1 45-2825-1	16-26 10-14	N/A N/A	N/A N/A	N/A N/A
AEP System 2112	45-2903* 45-1987	55-2903-1* 45-1987-1	16-24 16-26			
AK	45-1513	45-1513-1	16-26	45-2128 45-2129	45-2128-1 45-2129-1	16-22 20-26
AKA	45-1654 45-171 45-1608 45-170	45-1654-1 L-5211 45-1608-1 L-5210	16-26 16-26 10-14 10-14	45-2132 45-632 N/A N/A	45-2132-1 LB-912 N/A N/A	16-24 16-22 N/A N/A
AKB	45-1654 45-171 45-1608 45-170	45-1654-1 L-5211 45-1608-1 L-5210	16-26 16-26 10-14 10-14	45-2132 45-632 N/A N/A	45-2132-1 LB-912 N/A N/A	16-24 16-22 N/A N/A
BE	45-171 45-170	L-5211 L-5210	16-26 10-14	45-632	LB-912	16-22
BF	45-1773 45-1774 45-1939 55-1773*	45-1773-1 45-1774-1 45-1939-1 55-1773-1*	18-24 12-14 10-14 16-26	45-2126 45-2127	45-2126-1 45-2127-1	16-22 20-26
BMS13-48 TYPES 1-7, 25, 26, 30 (6mil Wall Thickness)	45-1551 45-2500 55-1987*	45-1551-1 45-2500-1 55-1987-1*	16-26 10-14 16-26	45-2612	45-2612-1	16-24
BMS13-48 TYPES 10-14, 27, 28, 31, 32, 35, 36 (8mil Wall Thickness)	45-1654 45-2500 45-1611 55-1987*	45-1654-1 45-2500-1 45-1611-1 55-1987-1*	16-26 10-14 10-14 16-26	45-2132	45-2132-1	16-24
BMS13-48 TYPES 8, 9, 15, 23, 24 (10mil Wall Thickness)	45-1987 45-2500 45-1611 55-1987*	45-1987-1 45-2500-1 45-1611-1 55-1987-1*	16-26 10-14 10-14 16-26	45-2133	45-2133-1	16-24
BMS13-60 TYPE 1-6, 19-21, 23-27, 33-34	45-2541 45-2543 55-2543*	45-2541-1 45-2543-1 55-2543-1*	10-14 16-26 16-24	N/A 45-2697	N/A 45-2697-1	N/A 16-24
BMS13-60 TYPE 12-18, 28-32	45-2542 45-2544	45-2542-1 45-2544-1	10-14 16-24	N/A N/A	N/A N/A	N/A N/A
BMS13-60 TYPE 13-18, 28-32	45-2686	45-2686-1	16-24	45-2698	45-2698-1	16-24
BMS13-60 TYPE 7-12	45-2565 45-2564 55-2564*	45-2565-1 45-2564-1 45-2564-1*	10-14 16-26 16-26	N/A N/A	N/A N/A	N/A N/A
BMS13-78	55-2933*	55-2933-1*	16-22			
BMS13-80	55-2934*	55-2934-1*	22-26			
CF	45-1773 45-1774 55-1773*	45-1773-1 45-1774-1 55-1773-1*	18-24 12-14 16-26	45-2126 45-2127	45-2126-1 45-2127-1	16-22 20-26
DE	45-171 45-170	L-5211 L-5210	16-26 10-14	45-632	LB-912	16-22
DK	45-1773 45-1774 45-1939 55-1773*	45-1773-1 45-1774-1 45-1939-1 55-1773-1*	10-14 12-14 10-14 16-26	N/A	N/A	N/A
DL	45-1939 55-2905*	45-1939-1 55-2905-1*	10-14 16-22	N/A	N/A	N/A
DM	45-1939 45-2811	45-1939-1 45-2811-1	10-14 16-24	N/A	N/A	N/A
DR	45-2824 45-2825 45-2828	48-2824-1 45-2825-1 45-2828-1	16-26 10-14 16-26	N/A N/A N/A	N/A N/A N/A	N/A N/A N/A
JN 1007 CH 002 TO 012	45-2775 55-2775*	45-2775-1 55-2775-1*	16-24 16-24			
JN 1007 CH 020 to 030	45-2776	45-2776-1	12-14			
MIL-W-16878/4	45-1611	45-1611-1	10-14	N/A	N/A	N/A
MIL-W-16878/5	45-174	L-5563	16-26	45-635	LB-915	16-22
MIL-W-22759/11/12/22/23	45-177 55-5560*	L-5560 55-5560-1*	16-26 16-26	45-2138 45-2139	45-2138-1 45-2139-1	16-24 18-26

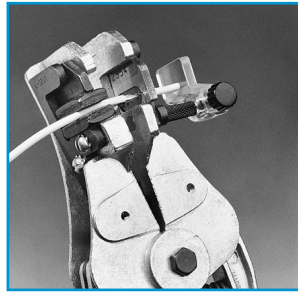
MIL-SPEC APPLICATION GUIDE

	Custom Stripmaster®			Custom Stripmaster® Lite		
	Hand Tool w/ Blade	Replacement Blade Only	Wire Range AWG	Hand Tool w/ Blade	Replacement Blade Only	Wire Range AWG
MIL-W-22759/16/17	45-1611 45-1987 55-1987*	45-1611-1 45-1987-1* 55-1987-1*	10-14 16-26 16-26	N/A 45-2133 45-2118	N/A 45-2133-1 45-2118-1	N/A 16-24 20-26
MIL-W-22759/18/19	45-1608 45-1551	45-1608-1 45-1551-1	10-14 16-26	N/A 45-2612 45-2125	N/A 45-2612-1 45-2125-1	N/A 16-24 20-26
MIL-W-22759/32/33/44/45/46	45-1987 55-1987* 45-1654	45-1987-1 55-1987-1* 45-1654-1	16-26 16-26 16-26	45-2133 45-2118 45-2132 45-2114	45-2133-1 45-2118-1 45-2132-1 45-2114-1	16-24 20-26 16-24 20-26
MIL-W-22759/7/8	55-1500*	55-1500-1*	16-22	N/A	N/A	N/A
MIL-W-22759/80/81/82/91/92	45-2542 45-2544 55-2693*	45-2542-1 45-2544-1 55-2693-1*	10-14 16-24 16-26	N/A 45-2693 45-2692	N/A 45-2693-1 45-2692-1	N/A 16-22 20-26
MIL-W-22759/83/84/85/86/87/88/89/90	45-2541 45-2543 45-2618 55-2685*	45-2541-1 45-2543-1 45-2618-1 55-2685-1*	10-14 16-26 16-26 16-26	N/A 45-2685 45-2799	N/A 45-2685-1 45-2799-1	N/A 16-24 16-24
MIL-W-24640/19/22/23/24	45-1957	45-1957-1	14-22	N/A	N/A	N/A
MIL-W-25038/3	55-2901*	55-2901-1*	16-22			
MIL-W-5086 TYPE I MIL-W-5086 TYPE II	45-1192 45-1159 45-1302	45-1192-1 45-1159-1 45-1302-1	8-12 10-14 16-22	N/A N/A N/A	N/A N/A N/A	N/A N/A N/A
MIL-W-5086/1/7	45-171	L-5211	16-26	45-634	LB-914	24-30
MIL-W-81044/11/12/13	45-1611 45-2500 45-1987 55-1987* 45-178	45-1611-1 45-2500-1 45-1987-1 55-1987-1 L-5561	10-14 10-14 16-26 16-26 26-30	N/A N/A 45-2133 45-2118 45-640	N/A N/A 45-2133-1 45-2118-1 LB-920	N/A N/A 16-24 20-26 24-30
MIL-W-22759/34/35/41/42/43	45-1611 45-2500 45-1987 55-1987* 45-178	45-1611-1 45-2500-1 45-1987-1 55-1987-1 L-5561	10-14 10-14 16-26 16-26 26-30	N/A N/A 45-2133 45-2118 45-640	N/A N/A 45-2133-1 45-2118-1 LB-920	N/A N/A 16-24 20-26 24-30
MIL-W-81044/16/17	45-1611 45-1610	45-1611-1 45-1610-1	10-14 16-26	N/A N/A 45-2112 45-2131	N/A N/A 45-2112-1 45-2131-1	N/A N/A 20-26 16-24
MIL-W-81044/4/5/6	45-170	L-5210	10-14	45-632 45-633	LB-912 LB-913	16-22 20-26
MIL-W-81044/8/9/10	45-173 45-174 45-175 55-2901*	L-5662 L-5563 L-5564 55-2901-1*	10-14 16-26 26-30 16-26	N/A 45-635 45-637 45-636	N/A LB-915 LB-917 LB-916	N/A 16-22 24-30 20-26
MIL-W-81381/1/2/6/7/8/9/10/17/21	45-1609 45-1551 45-178	45-1609-1 45-1551-1 L-5561	10-14 16-26 26-30	N/A 45-2612 45-2125 45-640	N/A 45-2612-1 45-2125-1 LB-920	N/A 16-24 20-26 24-30
MIL-W-81381/11/12/13/14/22	45-1608 45-1654 45-178	45-1608-1 45-1654-1 L-5561	10-14 16-26 26-30	N/A 45-2114 45-2132 45-640	N/A 45-2114-1 45-2132-1 LB-920	N/A 20-26 16-24 24-30
MIL-W-81381/17/21	45-1523 45-1672 45-1633 55-1633*	45-1523-1 45-1672-1 45-1633-1 45-1633-1*	16-26 16-26 16-26 16-26	45-2120 45-2121 N/A N/A	45-2120-1 45-2121-1 N/A N/A	20-26 16-24 N/A N/A
MIL-W-81381/18/19/20	45-1609 45-1672 45-1551	45-1609-1 45-1672-1 45-1551-1	10-14 16-26 16-26	N/A 45-2612 45-2125	N/A 45-2612-1 45-2125-1	N/A 16-24 20-26
MIL-W-81381/3/4	45-175	L-5564	26-30	45-637	LB-917	24-30
MIL-W-85485/5/6/7/8	45-1925 45-1924	45-1925-1 45-1924-1	10-14 16-24	N/A N/A	N/A N/A	N/A N/A
MIL-W-85485/9/10	45-1610	45-1610	16-26	45-2131	45-2131-1	16-24
MIL-W-85485/9/10/11/12	45-1611	45-1611-1	10-14	N/A	N/A	N/A
PAN 6411 DP 002 TO 012	45-2801	45-1773-1	16-24	45-2126 45-2127	45-2126-1 45-2127-1	16-22 20-26
PAN 6411 DP 020 & 030	45-2802	45-1774-1	12-14	N/A	N/A	N/A
PAN 6420 YR 004 TO 006	55-2903*	55-2903-1*	16-26			
PAN 6429 BE 002 TO 006	45-171	L-5211	16-24	45-632	LB-912	16-22
PAN 6588TW002	55-2775*	55-2775-1*	16-24			

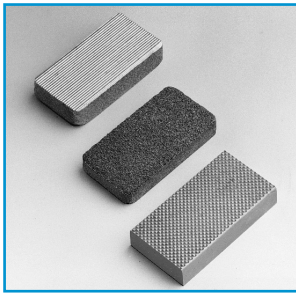
ACCESSORIES



Short-stop Latch protects wire strands by limiting the stripping stroke to 5/32 in. and retains the slug until the wire is ready for terminating.

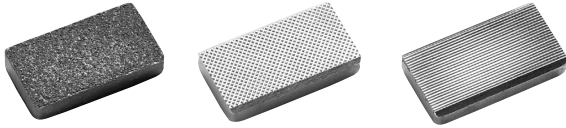


Transparent wire stop provides uniform stripping length.



Gripper Pads are available in your choice of either parallel, file or grit-type. File-type pads may be used on hard-to-grip insulations such as Kapton® and some Teflon®.

Replacement Gripper Pads



For Custom Stripmaster® and Custom Steel Stripmaster® Wire Strippers

Surface Type	Gripper Set* Part No.	Movable Gripper Part No.	Stationary Gripper Part No. (Thickness)
Grit**	LB-197	L-5212	L-5215 (.129 in.)
Grit**	LB-198	L-5212	L-5217 (.156 in.)
File‡	LB-721	LB-718	LB-719 (.129 in.)
File‡	LB-722	LB-718	LB-720 (.156 in.)
Parallel	LB-730	LB-727	LB-728 (.129 in.)
Parallel	LB-731	LB-727	LB-729 (.156 in.)

For Custom Stripmaster® Lite Wire Strippers

Surface Type	Gripper Set* Part No.	Movable Gripper Part No.	Stationary Gripper Part No. (Thickness)
Grit**	LB-1188	LB-882	LB-883 (.109 in.)
File‡	LB-1189	LB-1184	LB-1185 (.109 in.)
Parallel	LB-1190	LB-1186	LB-1187 (.109 in.)

* Gripper Set includes one movable gripper and one stationary Gripper.
 ** Grit pads are standard for most Custom Stripmaster® and Custom Stripmaster® Lite products.

‡ For use on hard-to-grip surfaces.

Gripper pad selection depends on insulation type and user preference.

Note: For 10-14 AWG, use .129 in. stationary gripper.

For 16-30 AWG, use .156 in. gripper.

Optional Accessories



- Wire Stop provides uniform stripping length, range = 3/32" to 3/4"
- Short stop latches protect wire strands by limiting stripping stroke to 5/32 in. and retain slug until wire is ready for terminating.

Description	Part No.
Transparent Adjustable Wire Stop (for Stripmaster® Wire Strippers)	L-5270
Transparent Adjustable Wire Stop (for Stripmaster® Lite Wire Strippers)	LB-1195
Transparent Adjustable Wire Stop (for Metric Stripmaster® Wire Strippers)	45-2019
Short Stop Latch for Custom & Customer Steel Stripmaster® Wire Strippers	L-5269
Short Stop Latch for Custom Stripmaster® Lite Wire Strippers	LB-1194

Replacement Frame Assemblies with Grit Grippers

For Custom Stripmaster® Wire Strippers	Part No.
Frame only, 10-14 AWG	L-5616
Frame only, 16-30 AWG	L-5617
Frame only, 10-14 AWG, Wire Stop and Latch	L-5618
Frame only, 16-30 AWG, Wire Stop and Latch	L-5619
Frame only, 10-14 AWG, internal spring (see note)	L-9039
Frame only, 16-30 AWG, internal spring (see note)	L-9038

Note: Frames with internal springs allow additional blade penetration pressure for difficult and multi-layered insulation types.

For Custom Stripmaster® Lite Wire Strippers	Part No.
Frame only	LB-895
Frame only, Wire Stop and Latch	LB-896

For Custom Steel Stripmaster® Wire Strippers	Part No.
Frame only, 10-14 AWG	LB-1091
Frame only, 16-30 AWG	LB-1092
Frame only, 10-14 AWG, internal spring (see note)	LB-1090
Frame only, 16-30 AWG, internal spring (see note)	LB-1089

Note: Frames with internal springs allow additional blade penetration pressure for difficult and multi-layered insulation types.

Free Application Engineering Service and special, made-to-order Custom Stripmaster® and Stripmaster® Lite Wire Strippers are available.

Stripmaster® Model 950 Wire Stripper

- Pneumatic precision wire stripper automatically strips 30 AWG through 10 AWG solid or stranded wire
- Accommodates six different wire diameters without switching tool or blade sets
- Electronic triggering for easy and accurate strips
- Meets military and commercial wire stripping specifications
- Replaceable wire guide and blades for maximum flexibility



Description	Part No.
Stripmaster® with individually adjustable strip lengths per stripping hole*	45-950
Stripmaster® with external adjustment knob for common strip length adjustment*	45-950-1
Stripmaster® with permanent face plate	45-954
Accessories	
Permanent Gripper Assembly only	45-950-4
Standard blade and bushings	Consult Factory
Flat bushings	
Air regulator	45-906
220V, 50Hz Transformer	45-951
T®-Cutter Lite Wire Cutter	45-260
Hex Key Set	691.020
12V Adapter (transformer)	K-7156

*3 ft. of wire for each stripping hole must be supplied at time of order.

STP Stripping System

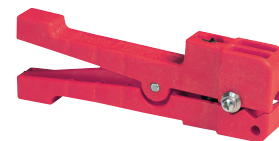
- Programmable Shielded Twisted Pair cable stripping system meets strict tolerances
- Hot-blade thermal stripping system adjusts to protect shielded wire for accurate stripping every time
- Automatically adjusts for cable up to .3125 in. (7.9mm)
- Adjusts for strip length of 1.25 in. to 6 in. (31.7 to 152.4mm)



Description	Part No.
STP, 115VAC, 60Hz 4A	45-930
STP, 230VAC, 50Hz, 2A	45-935
Replacement Air Regulator	45-906
Replacement Blade Set	K-7763
Replacement Front Grip Pad (2 required)	LA-2408
Replacement Standard Rear Grip Pad (6 required)	LA-2414
Replacement Optional Firm Rear Grip Pad (6 required)	691.020

Ringer™ Shielded Cable Stripper

- Precision stripping of most non-round cable, including extruded Teflon®, Kapton®, Tefzel®, Kynar® and high-temperature insulated cable
- Spring-loaded head provides even tension
- Heat-treated, stainless-steel blades resist wear
- Fixed blades are sized to insulation thickness for accurate stripping
- V-notch jaw automatically positions and holds cable
- Wire guide roller maintains stripping head alignment for square, clean cuts



Description	Blade	Color	Part No.
Cable Stripper, 5 Mil Insulation, includes Blade	K-6492	Orange	45-401
Cable Stripper, 8-10 Mil Insulation, includes Blade	K-6493	Yellow	45-402
Cable Stripper, Cable diameters up to 0.12 in.	sold separately	Blue	45-400
Cable Stripper, Cable diameters from 0.12 in. to 0.22 in.	sold separately	Red	45-403
Cable Stripper, Cable diameters from 0.12 in. to 0.22 in.	sold separately	Green	45-404

Ringer™ Shield Cable Stripper Blades

Cutting Depth	Part No.	Cutting Depth	Part No.	Cutting Depth	Part No.
.0030 in.	K-6491	.0090 in.	K-6496	.0140 in.	K-6501
.0044 in.	K-6492	.0100 in.	K-6497	.0160 in.	K-6502
.0060 in.	K-6493	.0110 in.	K-6498	.0180 in.	K-6503
.0070 in.	K-6494	.0120 in.	K-6499	.0200 in.	K-6504
.0080 in.	K-6495	.0130 in.	K-6500	.0220 in.	K-6505
				0.250 in.	45-2108-1

Select blade with cutting depth less than insulation thickness.

Wire-stops

Description	Part No.
Up to 2-1/2 in.	LB-825
2-1/2 in. to 5 in.	LB-840

IDEAL Gripper™

Description	Part No.
Slug Remover	45-333

Teflon® and Kapton® are registered trademarks of E. I. du Pont de Nemours and Company.

Kynar® is a registered trademark of Pennwalt.

