

ELARA™ FC-SERIES ID

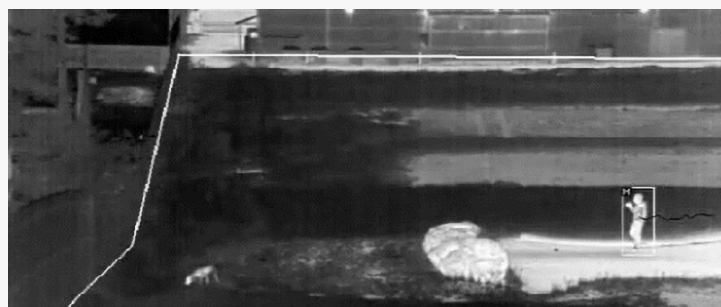
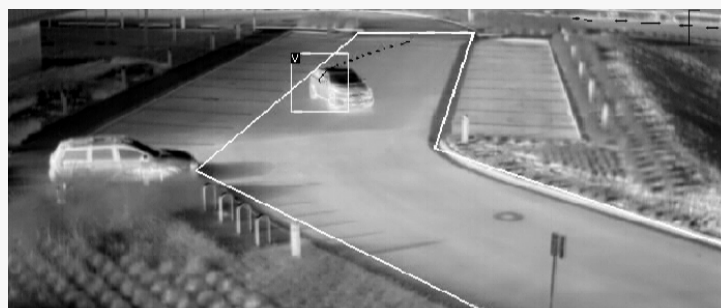
Thermal Analytics Camera



The Elara FC-Series ID combines best-in-class thermal image detail and high-performance edge perimeter analytics in a single device that delivers optimal intrusion detection in challenging environments and extreme conditions.

Elara FC-Series ID cameras feature on-board video analytics optimized for FLIR's thermal sensors. Easy to set up and capable of classifying human or vehicular intrusions,

Elara FC-Series ID cameras provide reliable detection with low false alarm rates, all without human intervention.



RELIABLE ONBOARD ANALYTICS

Accurately classify humans and vehicles

- Auto calibration for depth setup for a simple and reliable configuration.
- No additional measurement tools are needed, requiring only a single installer on site
- Allows analytics in corridor mode, reducing the number of cameras and improving the total cost of ownership
- Target hand-off to PTZ camera auto-tracking

INDUSTRY-LEADING IMAGE QUALITY

Crisp, clean imagery for unmatched video analytics performance and reliability

- Superior image quality in low-contrast conditions
- FLIR's custom AGCs provide images with extremely high contrast
- Dynamic Detail Enhancement (DDE) creates sharp edges and contrast that improve analytics performance

HIGH-PERFORMANCE LENSES

Wide range of lenses for optimal detection ranges in all conditions

- Choose from 17 high-performance lenses suitable for any perimeter or open area, including QVGA from 4° to 69° fields of view and VGA from 8° to 90° fields of view
- High performance optics deliver clear thermal video

SPECIFICATIONS

	Elara FC 3xx ID-Series		Elara FC 6xx ID-Series			Environmental			
Image						IP Rating (Dust & Water Ingress)		IP66 & IP67	
Array Format (NTSC)	320 × 240		640 × 480			Operating Temperature Range		-50°C to 70°C/-58°F to 158°F (Continuous Operation) -40°C to 70°C /-40°F to 158°F (Cold Start)	
Detector Type	Long-Life, Uncooled VOx Microbolometer					Storage Temperature Range		-50°C to 85°C/-58°F to 185°F	
Spectral Range	7.5 µm to 13.5 µm					Humidity		0-95% relative humidity	
Effective Resolution	76,800 pixels		307,200 pixels			Shock		MIL-STD-810G “Transportation”	
Pixel Pitch	Effective 34 µm (FC-344,332& 369) 17 µm (all other models)		17 µm			Vibe		IEC 60068-2-27	
Thermal Frame Rate	NTSC: 30 Hz - PAL: 25 Hz / 8.3 Hz					Vandalism		IK10 (except windows)	
E-Zoom	4x continuous E-Zoom					De-Icing / Anti-Icing		MIL-STD-810 F, Method 521.2 - 6 mm ice, 120 minutes with POE+, 4 mm ice with POE af FC-304, FC-305, FC-610 & FC-608 with Cold Weather kit	
Focus	Athermalized, focus-free					Warranty & Regulatory			
Sensitivity	<35 mK for F# 1.0 optics					Approvals		CE: EN55032 Class A; FCC 47 CFR Part 15, Subpart B, Class A (within CISPR 22:2008 Class A limits)	
Video						Certifications		IEC 60068-2-1:2007; IEC 60068-2-2:2007; ISTA-1A (Handling)	
Composite Video NTSC or PAL	Hybrid system with IP & analog video, Dynamic NTSC or PAL settings					Compliance		RoHS Directive 2011/65/EU; WEEE 2012/19/EU	
Analog Video Output Composite	1Vp-p (PAL or NTSC), 1 x BNC 75 Ω					Warranty		Camera: 3 Years Sensor: 10 Years	
Video Compression	Two independent channels of H.264 (Restricted VBR and CBR,10kbps-4Mbps, MPEG4, and MJPEG)					Optics			
Streaming Resolution	D1: 720 × 576, 4CIF: 704 × 576, Native: 640 × 512, Q-Native: 320 × 256, CIF: 352 × 288, QCIF: 176 × 144					Model		FOV	
Thermal AGC Modes Features	Brightness, Contrast, Sharpness, Grey Shade Compression, Gamma, Smart Screen Balance					FC-369 ID		69° × 56°	
Thermal AGC Region of Interest (ROI)	Default, Presets and User definable to insure optimal image quality on subjects of interest					FC-344 ID		44° × 36°	
Analytics Management	Web-based configuration and management. Masking of analytic detection areas, adjustable sensitivity, automatic responses, remote I/O control					FC-332 ID		32° × 26°	
Analytics Features	Region Entrance/Intrusion Detection, Crossover/Fence Trespassing;					FC-324 ID		24° × 18°	
Image Uniformity Optimization	Automatic Flat Field Correction (FFC); Thermal and Temporal Triggers					FC-317 ID		17° × 13°	
SD Card Snapshot Capture	Support for 32 GB SD Card (sold separately)					FC-313 ID		13° × 10°	
System Integration						FC-309 ID		9.2° × 7.0°	
Ethernet	10/100 Mbps					FC-305 ID		5.4° × 4.1°	
External Analytics Compatible	Yes					FC-304 ID		4.3° × 3.3°	
Control Input/Output	1x Dry Contact In; 1x Relay Out (rated load 0.025 A@ 5 VDC)					FC-690 ID		90° × 69°	
Network APIs	FLIR SDK, FLIR CGI, ONVIF Profile S					FC-669 ID		69° × 56°	
Network						FC-644 ID		44° × 36°	
Supported Protocols	IPv4, HTTP, Bonjour, UPnP, DNS, NTP, RTCP, TCP, UDP, ICMP, IGMP, DHCP, ARP, FTP, RTP/RTSP, Unicast/Multicast, TCP/IP, HTTP, IEEE 802.1X, SNMP					FC-632 ID		32° × 26°	
General						FC-625 ID		25° × 20°	
Weight With Sunshield	7.5/9/13/19/25/35 mm 1.8 kg (4 lb) - 60 mm 2.0 kg (4.5 lb) - 75 mm 2.2 kg (4.75 lb)					FC-617 ID		17° × 14°	
Weight Without Sunshield	7.5/9/13/19/25/35 mm 2.2 kg (4.75 lb) - 60 mm 2.4 kg (5.25 lb) - 75 mm 2.5 kg (5.5 lb)					FC-610 ID		10° × 8.2°	
Dimensions (L, W, H)	Without sunshield: 259 × 114 × 106 mm/10.2” × 4.5” × 4.2” With sunshield: 282 × 129 × 115 mm/11.1” × 5.1” × 4.5”					FC-608 ID		8.6° × 6.6°	
Input Voltage	Source	POE (802.3 af)	POE+ (802.3 at)	12 VDC	24 VDC	24 VAC(VA)			
	Heater off	<5.5 W	<5.5 W	<5.5 W	<5.5 W	<8 W			
	Heater on (@ 100%)	N/A	<25 W	<25 W	<25 W	<32 W			
Surge Immunity on AC Power Lines	CE: EN55032 Class A; FCC 47 CFR Part 15, Subpart B, Class A (within CISPR 22:2008 Class A limits)					Specifications are subject to change without notice.			
Surge Immunity on Signal Lines	EN 55024: 2010 and 55032: 2010 to 4.0 kV on AC aux power lines; EN 50130-4:2011; IEC 62599-2:2010								
Cyber Security									
	IEEE 802.1x TLS/HTTPS User Authentication Access Control via Firewall Digest Authentication								

This product is subject to United States export regulations and may require US authorization prior to export, reexport, or transfer to non-US persons or parties. Diversion contrary to US law is prohibited. For assistance with confirming the Jurisdiction & Classification of Teledyne FLIR, LLC products, please contact exportquestions@flir.com. ©2022 Teledyne FLIR, LLC. All rights reserved.

Revised on 01/31/22
Elara™ FC-Series ID_Datasheet-LTR 20-0858