


**SYMBOLS ON PRODUCT**

-  Warning or Caution
-  Wear Approved Eye Protection
-  NOT insulated - Will NOT protect against electric shock
-  Read Instructions

**INSTRUCTIONS**

**FOR BEST RESULTS (FIG. A):**

1. Strip stranded copper wire to the terminal manufacturer's suggested length:
2. Insert stripped wire into the appropriate sized ferrule, as designated by the terminal manufacturer.
3. Place wire and terminal between the multiple jaws at the head of the tool **1**.
4. Line up the terminal so that the metal collar will be compressed by the crimping tool.
5. Squeeze the handles together until they release, indicating a complete crimp cycle.

**NOTE:** Once a crimping cycle has been started, the handles will not release until a complete crimp cycle has been achieved or by triggering lever **2** on the bottom handle.

6. Remove the crimped assembly from the tool and verify that the terminal is securely crimped onto the wire.

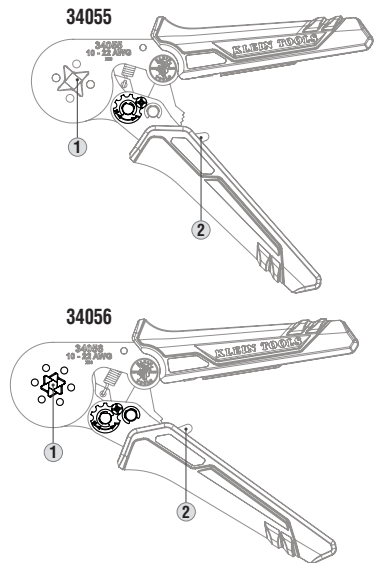
**TO ADJUST THE FORCE REQUIRED FOR CRIMPING (FIG. B):**

1. Make sure the tool is completely open.
2. Using a phillips screwdriver, remove the screw **3** holding the adjustment knob **4** in place.
3. Turn the adjustment knob to the desired setting, then replace and tighten the screw.
4. Test the tool's actuation and repeat steps 1 – 3 until the desired crimp force is achieved.

**NOTE:** For a lower crimping force, turn the adjustment knob counterclockwise one notch at a time; for more crimping force turn the knob clockwise.

**INSTRUCTIONS - RATCHETING FERRULE CRIMPERS**

**FIG. A**



**FIG. B**

