

Input Tools

SERIES 264 — Digimatic Gage/PC Data Input Device

FEATURES

- The input tool allows you to connect any Mitutoyo gage, with SPC output, directly to your PC.
- An USB keyboard signal conversion input tool, IT-016U converts measurement data to keyboard signals and directly inputs them to cells in off-the-shelf spreadsheet software such as Excel.

An RS-232C communication input tool, IT-007R is also available to input data through RS-232C communication.

- More accurate measurement is possible using an optional foot switch.

SPECIFICATIONS

Product Code No.	Input Tool for Keyboard 264-005	Input Tool for RS-232C 264-007	Input Tool for USB 264-016
Measuring Tools Required*1	Mitutoyo Digimatic measuring tools with SPC output		
PC Requirement	PC compatible, with PS/2 style keyboard interface*2 (Can be also connected to a laptop computer.) Connects to keyboard port on CPU	PC Compatible, (including laptops) with RS-232C Interface Connects to RS-232C port on CPU (D-sub 9-pin connector)	PC Compatible, (including laptops) with USB 2.0 or 1.1 port
Outside Dimensions HxWxD	2.8" x 1.7" x .9" (72 x 44 x 23.5 mm)		2.5" x 1.5" x .83" (64 x 38 x 21 mm)
Mass	2.5oz. (70g)(including cable and connector)	3.2oz. (91g)(including cable and connector)	2.0oz (56g)

*1: Connecting cable (optional accessory) is required for a connection to a Digimatic measuring tool.

*2: Cannot be used for computers that use USB keyboard. When using a IBM Think Pad Series, a commercial keyboard adapter is required. When using AT style keyboard, adapter for conversion is required.



264-016



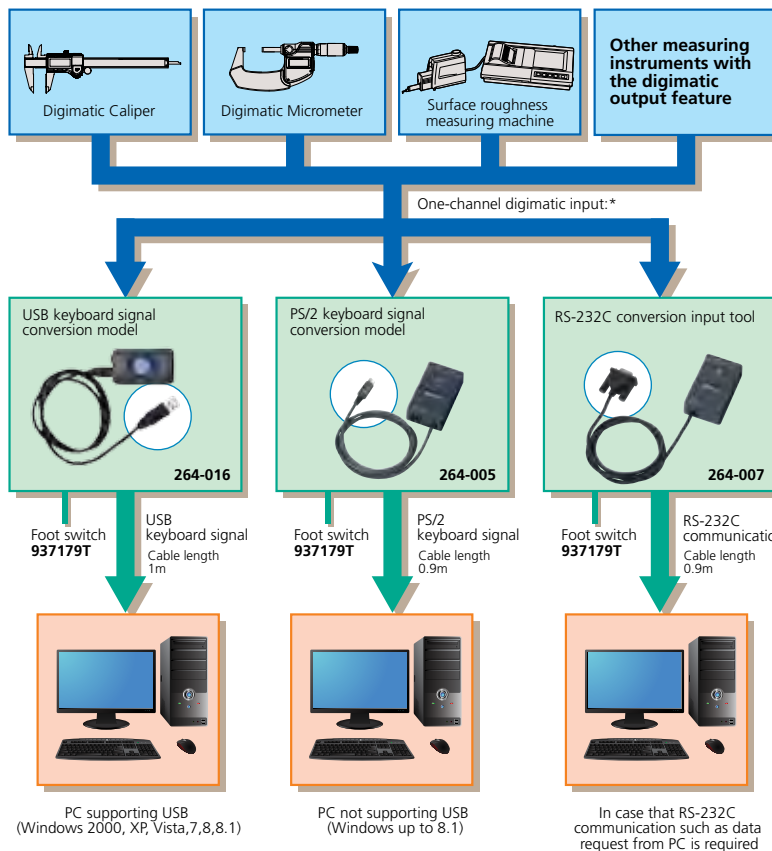
264-005



264-007

Optional Accessories

- 937179T: Foot switch
939039: Gage selector



* When you use an optional gage selector 3, you can connect up to three measuring gages and select an input by switching them. When using 264-016, you can connect multiple input tools at the same time with an off-the-shelf USB hub. Simultaneous input, however, is not supported. For cables used to connect each measuring gage and input tool, refer to page A-13.