

Remote Reading Thermometers



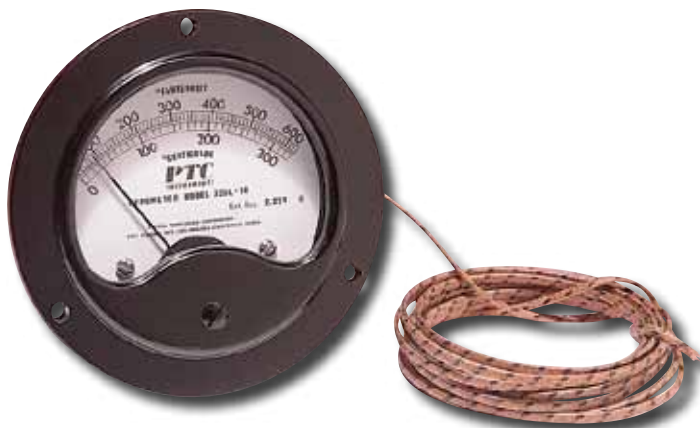
These vapour filled dial thermometers indicate temperatures in remote or inconvenient places via a minimum 5-foot sensor cable. Simply insert the sensor bulb in the environment to be measured and mount the dial in an accessible location.

Features:

- Standard instruments supplied with 5 feet of 3/32" bronze armored copper capillary tubing, 6" brass sensing bulb and 1/2" NPT brass union. (Other lengths available)
- Standard thermometers furnished with bottom connection capillary and recessed flange for surface mounting (**35BL Series**)
- Also available with back connection capillary and forward flange for panel mounting (**35RB Series**)
- White 3-1/2" diameter dial with black graduations; non-linear scales
- Dual scale, all thermometers feature Fahrenheit range listed as well as Celsius equivalent
- Accuracy $\pm 0.05\%$ of full scale reading
- Can be inclined at any angle without loss of accuracy
- Thermometers protected for 25% overrange

Range	Surface Mount		Panel Mount	
	Model	Price	Model	Price
5' CAPILLARY				
-40 to 110°F	35BL110-5	\$131	35RB110-5	\$150
0 to 150°F	35BL150-5	\$140	35RB150-5	\$150
20 to 220°F	35BL220-5	\$148	35RB220-5	\$168
30 to 300°F	35BL300-5	\$131	35RB300-5	\$168
10' CAPILLARY				
-40 to 110°F	35BL110-10	\$151	35RB110-10	\$170
0 to 150°F	35BL150-10	\$151	35RB150-10	\$170
20 to 220°F	35BL220-10	\$162	35RB220-10	\$170
30 to 300°F	35BL300-10	\$151	35RB300-10	\$170
15' CAPILLARY				
-40 to 110°F	35BL110-15	\$185	35RB110-15	\$191
0 to 150°F	35BL150-15	\$199	35RB150-15	\$191
20 to 220°F	35BL220-15	\$176	35RB220-15	\$191
30 to 300°F	35BL300-15	\$172	35RB300-15	\$219

Pyrometer Kits



The Model 326 Series Pyrometer Kits are designed to offer the user an inexpensive and very flexible method of accurately measuring temperatures from 0 to 2300°F

The basic items supplied in each kit are:

- 1) The meter is a d'Arsonval type millivolt meter which has been calibrated to indicate temperature rather than voltage. Accuracy is $\pm 2\%$ of full scale range. A cold junction temperature adjustment screw is located immediately below the dial. The front flange is provided for mounting the meter flush with a panel or dashboard.
- 2) Six feet of 20-gauge wire is the standard length provided in each kit. The thermocouple wire is either Iron Constantan (IC) or Chromel Alumel (CA), depending upon the temperature range required. The wire is glass insulated to withstand high temperatures.
- 3) The black anodized aluminum mounting bracket is conveniently arranged with two sets of three mounting holes for vertical or horizontal meter mounting.

Model	Range	Resistance	Price
326-IC	0 to 1600°F/0 to 850°C	2.22 Ω	\$270
326-CA	0 to 2300°F/0 to 1260°C	3.58 Ω	\$270
326L-IC	+30 to 630°F/0 to 330°C	2.22 Ω	\$270